

The Greater Boston  
**FOOD  
BANK**



2013 Annual Report  
**ONE MEAL A DAY.**

Everyone has a role in ending hunger in our community.®

# Leadership Message

Dear Friends and Supporters,

Fiscal year 2013 at The Greater Boston Food Bank (GBFB) was full of tremendous accomplishments and challenges. GBFB ended the year at a total food distribution equaling 48 million pounds, enough for 40 million nutritious meals to support our ONE MEAL A DAY strategic objective. This surpassed our food distribution goal by 2 million pounds, and is both an accomplishment and indication of the growing need.

We are proud to say that of the 48 million pounds of food, 25% was fresh produce and 80% met the highest nutrition standards. The GBFB Nutrition Team ensures that our efforts support healthy lives and communities. In addition to rating every food product, our Registered Dietitians offer nutrition education and meal planning services to our 540 member agencies and clients. Nutrition and nutrition education are and will continue to be critical components of our mission.

The year also brought economic and environmental uncertainty, and GBFB was able to nimbly respond to these challenges. When the northeast was devastated by Hurricane Sandy, Team GBFB assisted with relief efforts by sending trucks, food, supplies, and volunteers to Connecticut, New York, and New Jersey. As the country experienced the uncertainty of SNAP cuts and the government shutdown, GBFB worked to acquire and distribute more food. GBFB's agility is a result of our operational efficiencies, which are possible because of our loyal and generous supporters.

Fiscal year 2014 will bring new successes, challenges, and goals. We expect to continue to see increasing food prices, rising costs of living, and the unknowns of government funding and support from the U.S. Department of Agriculture. Each of these factors will impact neighbors right in our communities. Our 2013 efforts instill us with confidence that together, we can continue to work to End Hunger Here no matter what the year brings.

GBFB's 2013 accomplishments were only possible because of the generosity and dedication of our friends, partners, volunteers, and supporters. We are grateful for the numerous types of support, which make our work to End Hunger Here possible. Each listed in this report has made a difference in the lives of many. Team GBFB, as well as those in need in eastern Massachusetts, thank you.

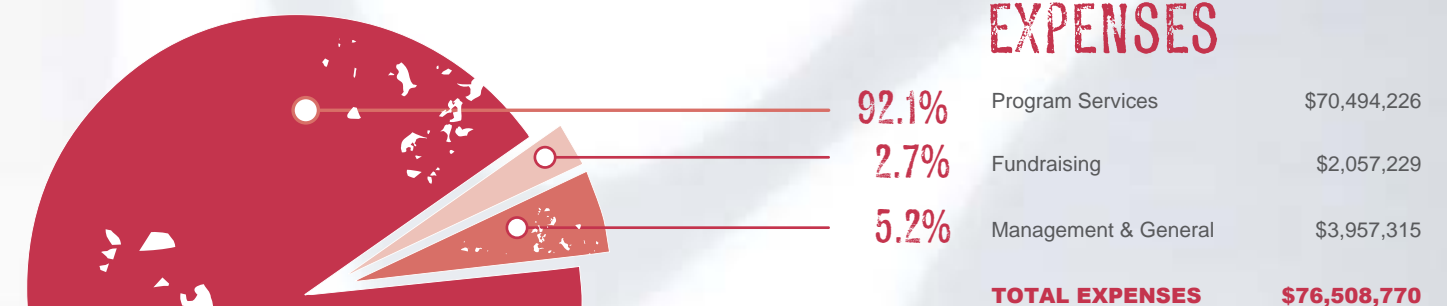
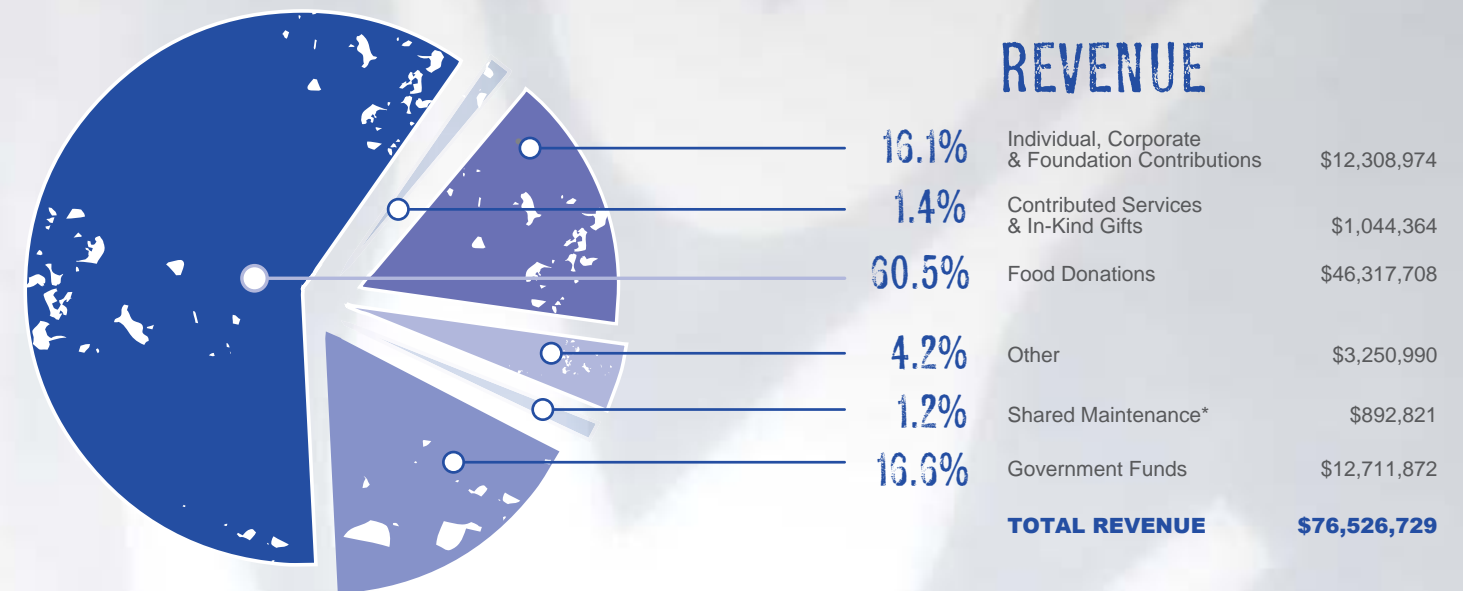
Hunger hurts. We can help.

Sincerely,

  
**Catherine D'Amato**  
 President and CEO

  
**Philip Licari**  
 Board Chair

# Financial Highlights



**ENDING NET ASSETS FOR 2013 \$35,483,261**

\* SHARED MAINTENANCE: GBFB receives shared maintenance fees from its member agencies in order to offset the cost of handling and redistributing donated food, as recommended by Feeding America.



# Mapping Hunger To Provide ONE MEAL A DAY

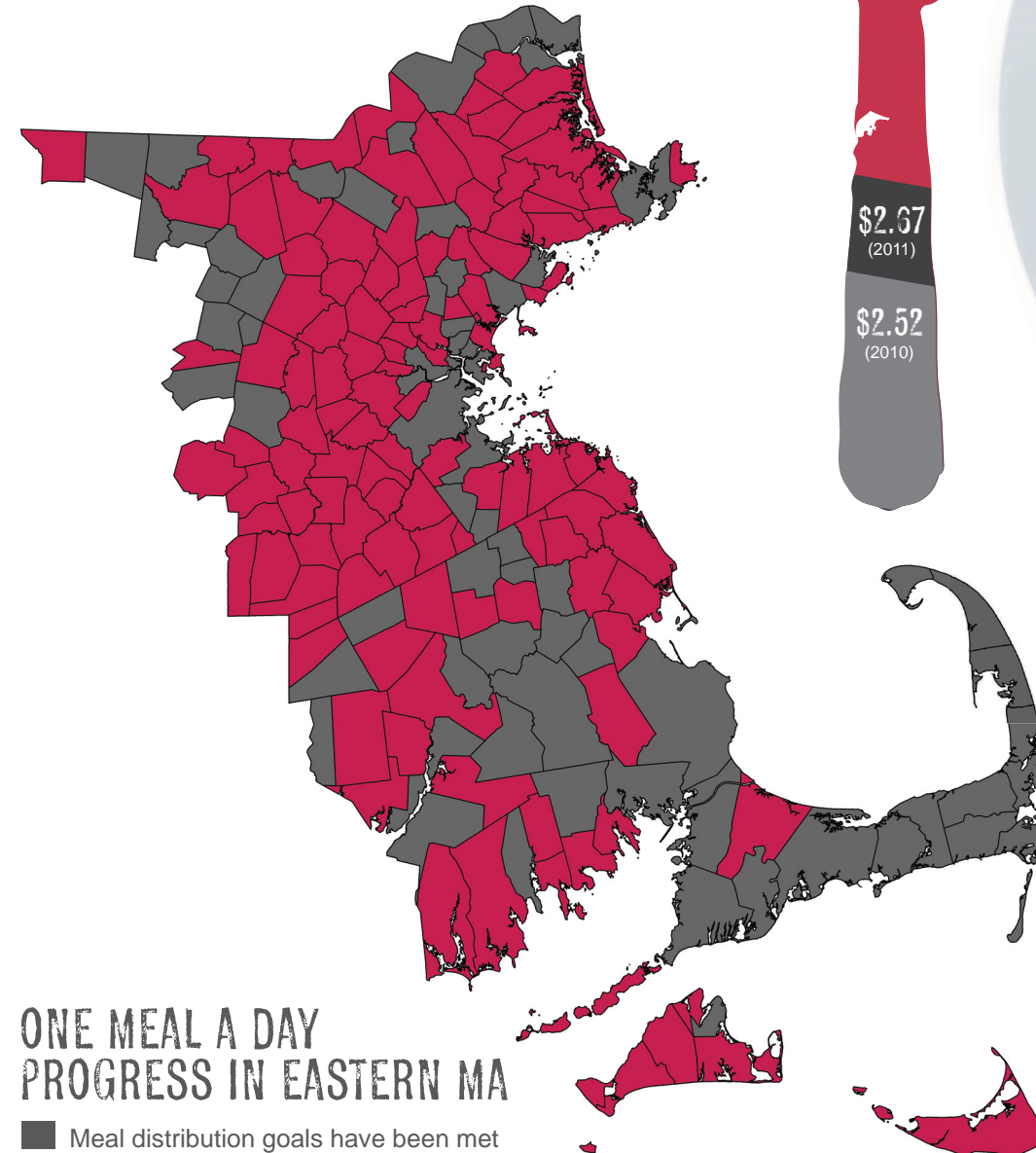
The Greater Boston Food Bank (GBFB) is constantly innovating to address the growing problem of hunger in our community. GBFB is a leader among U.S. food banks in our use of geo-mapping technology to help reach our strategic objective of providing ONE MEAL A DAY to those in need in eastern Massachusetts. As new challenges emerge, we're working not just harder, but smarter and more efficiently.

Catherine D'Amato, GBFB President and CEO notes, "Like any large and complex business operation – last year we distributed a record 48 million pounds of food – GBFB is using technology to guide decision-making and planning. Our 'hunger mapping' helps us to gauge progress toward our ONE MEAL A DAY objective, and ensures that every dollar donated to GBFB is spent efficiently and effectively."

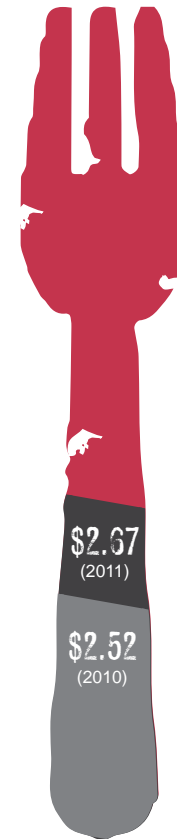
GBFB's sophisticated use of technology allows us to maximize every resource and help ensure we're distributing food to those who need it most. In a location with low food security and/or limited access to high quality food (i.e., food deserts), we work with our partners, government agencies and community groups such as Hunger Networks to increase food distribution. When local resources don't have the capacity to meet the need, GBFB introduces direct distribution programs, which have expanded significantly in recent years.

"We're using the latest data from the USDA (United States Department of Agriculture), Feeding America and surveys from our 540 partner food pantries and community meal programs to map where people are facing hunger," explains GBFB's Capacity Analysis Manager, D.J. Taitelbaum. "Our maps show us county-by-county and even town by town where we're alleviating hunger, and where we aren't."

Shifting environmental and economic factors impact hunger levels, and make our ONE MEAL A DAY objective a moving target. In 2014, we expect rising costs for food and other essentials of daily living, combined with higher unemployment, to increase need in eastern Massachusetts. To achieve our goal, GBFB will require more resources and support from the community.



NATIONAL AVERAGE COST PER MEAL (EST.)\*



EASTERN MASSACHUSETTS AVERAGE COST PER MEAL (EST.)\*



# ONE MEAL A DAY

\*Gundersen, C., Waxman, E., Englehard, E., Satoh, A., Chawla, N. Map the Meal Gap 2013: A report on county and congressional district level food insecurity and county food cost in the United States in 2011. Feeding America, 2013  
\*\* Approximately 15.5 million additional meals went to cities and towns where the ONE MEAL A DAY objective has been reached





## Half a Billion Pounds

In September, with the help of our generous partners and donors, The Greater Boston Food Bank marked a significant milestone in our 32 year history: distributing half a billion pounds of food to those in need in eastern Massachusetts. That's 417 million meals, enough to feed a sold out crowd at Fenway Park 11,000 times! Achieving this milestone speaks to the great work we have accomplished over three decades, but unfortunately, also speaks to the growing need in our communities. It will take about 54 million pounds of food to reach our objective of providing ONE MEAL A DAY to children, families, and seniors in need in the 190 cities and towns that we serve. With the continued support of our generous partners and donors, this is a problem we can solve together.

*Photo above: Azzuré Thompson, a student at Hennigan Elementary School in Jamaica Plain, is one of the thousands of kids that receive food from GBFB's School-Based Pantry program.*

### BARNSTABLE COUNTY

**Barnstable**  
Cape Cod Hunger Network:  
Brown Bag

### BRISTOL COUNTY

**Fall River**  
St. Anne's Food Pantry:  
Brown Bag  
Thomas Chew Memorial  
Boys & Girls Club: Mobile Market  
Thomas Chew Memorial  
Boys & Girls Club: Kids Cafe  
Bristol Community College:  
Mobile Market

### Taunton

The Episcopal Church of St. Thomas:  
Brown Bag

### ESSEX COUNTY

**Haverhill**  
Merrimack Valley Elder Services:  
Brown Bag

### Lawrence

Merrimack Valley Elder Services:  
Brown Bag  
Lawrence Public Schools:  
BackPack  
Lawrence Senior Center:  
Mobile Market  
Lawrence Senior Center:  
Veterans' Mobile Market

### Lynn

Greater Lynn Senior Services:  
Brown Bag  
Lynn Public Schools:  
BackPack  
Lynn Public Schools:  
School-Based Pantry

### MIDDLESEX COUNTY

### Everett

Everett Public Schools:  
BackPack

### Lowell

Lowell Public Schools:  
BackPack  
Merrimack Valley Elder Services:  
Brown Bag

### Malden

North Suburban Women, Infants and  
Children/Hallmark Health Services:  
Mobile Market

### Somerville

Clarendon Hill Towers:  
Mobile Market  
Somerville-Cambridge  
Elder Services:  
Brown Bag

### NORFOLK COUNTY

**Quincy**  
Ward Two Community Center:  
Brown Bag

### PLYMOUTH COUNTY

**Brockton**  
BAMSI - Dorn Davies Senior Center:  
- Brown Bag  
- Mobile Market  
Boys & Girls Club of Brockton:  
Kids Cafe  
VA Boston Healthcare System:  
Veterans' Mobile Market

### SUFFOLK COUNTY

### Boston

Boston Housing Authority  
- Cathedral:  
Perishable Distribution  
- Torre Unidad:  
Perishable Distribution  
Department of Transitional  
Assistance (DTA):  
Direct Distribution

### Brighton

Commonwealth Tenants Association:  
Brown Bag  
Commonwealth Tenants Association:  
Mobile Market

### Charlestown

Bunker Hill Community College:  
Mobile Market  
Charlestown Community Center:  
Brown Bag  
Department of Veterans' Services:  
Mobile Market

### Chelsea

Chelsea Public Schools:  
BackPack  
Chelsea Senior Center:  
Brown Bag  
Gerald and Darlene Jordan Club/  
Kraft Family Youth Center:  
Kids Cafe

### Dorchester

Blue Hill Boys & Girls Club/George  
Robert White Youth Center:  
Kids Cafe  
Boston Housing Authority  
- Franklin Field:  
Perishable Distribution  
- Lower Mills:  
Perishable Distribution  
Boston Public Schools:  
School-Based Pantry  
Boys & Girls Clubs of Dorchester:  
Kids Cafe

### Jamaica Plain

Boston Public Schools:  
School-Based Pantry

### Mattapan

ABCD Mattapan Family  
Service Center:  
Brown Bag  
Boston Housing Authority Gallivan:  
Perishable Distribution

### Roxbury

Boston Housing Authority  
- Holgate:  
Perishable Distribution  
- Dr. Martin Luther King, Jr.:  
Perishable Distribution  
Boston Public Schools:  
BackPack  
Boston Public Schools:  
School-Based Pantry  
Department of Transitional  
Assistance (DTA):  
Direct Distribution  
Roxbury Boys & Girls Club/  
Yawkey Club:  
Kids Cafe

### South Boston

Boston Housing Authority  
- Cathedral:  
Perishable Distribution  
Boston Public Schools:  
School-Based Pantry  
South Boston Boys & Girls Club:  
Kids Cafe



# Member Agencies

## BARNSTABLE COUNTY

### Barnstable

The Family Pantry of Cape Cod - Cape Cod Community College

### Bourne

Friends of Bourne Council on Aging - BackPack Program

### Brewster

Lower Cape Outreach Council - Brewster Pantry  
Saint Vincent de Paul - Our Lady of Cape Church

### Chatham

Lower Cape Outreach Council - Chatham Pantry

### East Sandwich

Saint Vincent de Paul - Sandwich

### Eastham

Lower Cape Outreach Council - Eastham Pantry

### Falmouth

Children's Study Home - Cape START Program  
Falmouth Service Center - Food Pantry  
Falmouth Service Center - Meals Program  
Falmouth Service Center - School Based Mobile Market  
Fellowship Health Resources - Fairwinds Clubhouse

### Harwich

Lower Cape Outreach Council - Harwich Pantry  
The Family Pantry of Cape Cod

### Hyannis

AIDS Support Group of Cape Cod  
Cape Cod Child Development Center  
Community Action Committee of Cape Cod & the Islands — Safe Harbor  
First Baptist Church Hyannis Food Pantry  
Homeless Not Hopeless  
Housing For All - Champ House  
Independence House Food Pantry  
Nam Vets Association of the Cape and Islands Food Pantry  
Saint Francis Xavier Food Pantry  
Salvation Army - Hyannis Pantry  
Salvation Army - Hyannis Soup Kitchen

### Mashpee

Christ the King

### North Truro

Lower Cape Outreach Council - Truro Pantry

### Orleans

LOCAL/Lower Cape Lunch  
Lower Cape Outreach Council  
Lower Cape Outreach Council - Orleans Pantry

### Pocasset

Friends of Bourne Council on Aging - Bourne Friends Food Pantry

## Provincetown

Lower Cape Outreach Council - Provincetown Pantry  
Soup Kitchen In Provincetown, Inc.

## South Yarmouth

Yarmouth Food Pantry

## Sandwich

Sandwich Food Pantry, Inc.

## South Wellfleet

Lower Cape Outreach Council - Wellfleet Pantry

## West Harwich

Cape Cod Council of Churches

## BRISTOL COUNTY

### Acushnet

The Shepherd's Pantry

### Attleboro

Attleboro Area Council of Churches - Family Cafe at The Evangelical Covenant Church  
Attleboro Area Council of Churches - Food 'n Friends I  
Attleboro Area Council of Churches - Food 'n Friends III  
Attleboro Area Council of Churches - Food 'n Friends VI  
Community Care Services - Family Resource Center  
Hebron Food Pantry, Inc.  
Murray Unitarian Universalist Church Food Pantry  
Saint Joseph's Food Cellar  
Self Help Attleboro

### Berkley

Community Care Services - Lindencroft Program

### Fall River

Citizens For Citizens  
Fall River Community Soup Kitchen - Church of the Holy Spirit  
Fall River Portuguese Seventh-Day Adventist Church  
Ferry Street Ministries - Lighthouse Christian Center  
Greater Fall River Food Pantry  
New Life Worship Center Food Pantry  
PEOPLE, Inc. - FACE Food Pantry  
Sacred Heart - Food Pantry  
Sacred Heart - Soup Kitchen  
Saint Anne's Church Food Pantry  
Salvation Army - Fall River Meals  
Salvation Army - Fall River Pantry  
Salvation Army - Gentle Arms  
Sharing a Blessing  
Stanley Street Treatment & Resources  
Steppingstone - Fall River Men & Women's Shelter  
Steppingstone, Inc. - North Main  
Veteran's Association of Bristol County, Inc.

### Mansfield

Attleboro Area Council of Churches - Food 'n Friends V  
Our Daily Bread - Mansfield

### New Bedford

American Red Cross - New Bedford Pantry

Catholic Social Services - New Bedford

Eliot Community Human Services - New Bedford STARR  
Grace After-School Summer Program  
Grace Episcopal Church Food Pantry  
Immigrants' Assistance Center, Inc.  
M.O. Food = L.I.F.E. Food Pantry  
New Bedford Council on Substance Abuse - Harmony House  
Pentecostal Assembly  
People Acting in Community Endeavors - Emergency Food Pantry  
Saint Anthony of Padua Food Pantry  
Saint Anthony of Padua Soup Kitchen  
Saint Lawrence Parish Food Pantry  
Saint Martin's Food Pantry  
Salvation Army - New Bedford Meals  
Salvation Army - New Bedford Pantry Program  
Seventh-Day Adventist Portuguese Church Pantry  
Steppingstone, Inc. - Pleasant  
Veterans Transition House

### North Attleboro

Attleboro Area Council of Churches - Family Cafe at The Waters Church  
Attleboro Area Council of Churches - Food 'n Friends II

### Norton

North Cottage Program, Inc.  
The Cupboard of Kindness, Inc.

### Raynham

Raynham Food Basket

### Seekonk

Attleboro Area Council of Churches - Food 'n Friends IV  
DoorWays, Inc.

### Somerset

Annelle Delorme Hagerman Food Pantry  
Church of Our Savior Meals Program

### South Attleboro

Saint Theresa Food Pantry

### Swansea

Bethany Gospel Chapel

### Taunton

Coyle and Cassidy High School Pantry  
North Taunton Baptist Church Food Pantry  
Our Daily Bread  
Saint Vincent de Paul - Taunton

### Westport

Friends of Westport Council On Aging Pantry

## DUKES COUNTY

### Edgartown

Martha's Vineyard Center for Living - Edgartown Senior Center

### Oak Bluffs

Martha's Vineyard Center for Living - Oak Bluffs Senior Center

### Vineyard Haven

Martha's Vineyard Center for Living - Island Food Pantry

Martha's Vineyard Center for Living - Tisbury Senior Center

## West Tisbury

Martha's Vineyard Center for Living - Up-Island Senior Center

## ESSEX COUNTY

### Amesbury

Northeastern Family Institute, Inc. - Lakeside Assessment  
Our Neighbor's Table - Meals  
Our Neighbor's Table Food Pantry

### Beverly

Beverly Bootstraps - Food Pantry  
Beverly Bootstraps - Mobile Market  
Salvation Army - Beverly Pantry

### Bradford

Saint Vincent de Paul - Sacred Heart  
Bradford  
Team Coordinating Agency - Pathways

### Danvers

CAB Health & Recovery Services - Danvers Treatment Center  
Eliot Community Human Services - Danvers Respite

### Gloucester

The Open Door - Food Pantry  
The Open Door - Meals Program  
The Open Door - Mobile Market

### Haverhill

All Saint's Food Pantry  
Common Ground Cafe  
Common Ground Food Pantry  
Emmaus, Inc.  
Joyful Ladle  
Open Hearts Ministries Inc.  
Salvation Army - Haverhill Food Pantry  
Salvation Army - Haverhill Soup Kitchen

### Lawrence

Food for the World - Community Services Agency  
Food for the World - Free Methodist Church Pantry  
Food for the World - Saint Alfio's Villa  
Food For The World Food Pantry  
Saint Patrick's Church - Cor Unum Meal Center

### Lowell

Catholic Charities - Lowell Food Pantry

### Lynn

Bridge House - Lynn Family Shelter  
CAB Health & Recovery Services - Ryan House / Transitional Support Services  
East Coast International Church Pantry  
Eliot Community Human Services - Elizabeth Seton House  
Eliot Community Human Services - Respite  
Free Methodist Church of North America - Candelero De Dios  
Lynn City Mission  
Lynn Shelter Association, Inc. - Lynn Emergency Shelter  
My Brothers Table  
Project Cope Women's Program  
Sacred Heart Tree of Life Pantry  
Saint Stephen's Food Pantry

Saint Vincent de Paul - St Joseph's Parish Food Pantry

## Lynnfield

Calvary Christian Church - Blessing Room

## Merrimac

Our Neighbor's Table - Merrimac  
Mobile Food Pantry

## Newburyport

Among Friends  
John Ashford Link House  
Turning Point - Newburyport

## Peabody

Haven From Hunger Meals  
Haven From Hunger Pantry  
Northeastern Family Institute, Inc. - Lakeside  
Saint Vincent de Paul - Saint John the Baptist

## Salem

Boys & Girls Club of Greater Salem  
East Gate Christian Fellowship - Joseph's Storehouse  
Food for the World - Spanish Free Methodist Church Pantry  
North Shore Community Action Programs - Salem CyberSpace  
Salem Mission Inc. - Lifebridge  
Salvation Army - Salem Meals  
Salvation Army - Salem Pantry  
The Salem Pantry

## Saugus

Grace Ministries Food Pantry  
Salvation Army - Adult Rehab Center  
Twelve Step of New England - Saugus  
United Parish Food Pantry

## South Hamilton

Acord Food Pantry

## MIDDLESEX COUNTY

### Acton

Mount Calvary Community Supper

### Ashland

Southern Middlesex Opportunity Council - Meadows & Shadows House

### Belmont

Belmont Church of God Food Pantry

### Boxborough

Acton Community Supper and Food Pantry

### Burlington

Burlington Food Pantry

### Cambridge

Aids Action Committee - Youth On Fire  
Alliance Foundation for Community Health - Zinberg Clinic Pantry  
American Red Cross - Disaster Relief  
Cambridge Economic Opportunity Committee Food Pantry  
Cambridge Senior Center Food Pantry  
Cambridgeport Baptist Church Food Pantry  
Caspar - Emergency Service Center  
East-End House  
Faith Lutheran Church - Faith Kitchen

First Church Shelter  
Food for Free  
Harvard Square Churches Meal Program  
Heading Home Inc. - Women's Drop-In  
Loaves & Fishes - Meals Program  
Margaret Fuller House Food Pantry  
Massachusetts Avenue Baptist Church Meals  
Massachusetts Avenue Baptist Church Pantry  
Project Uplift of Union Baptist Church  
Saint James Episcopal - Helping Hand Pantry  
Saint Paul's AME Church Pantry  
Salvation Army - Cambridge Food Pantry  
Salvation Army - Cambridge Meals  
Tuesday Meal Program

## Concord

Open Table - Concord Food Pantry

## Devens

Loaves & Fishes - Food Pantry

## Everett

A Better Tomorrow  
Saint Vincent de Paul - Immaculate Conception Food Pantry

## Framingham

Eliot Community Human Services - New River Academy  
Hope Worldwide New England Inc.  
New Bethel Baptist Church Pantry  
Saint Bridget's Food Pantry  
Salvation Army - Framingham Food Pantry  
Salvation Army - Framingham Meals Program  
Southern Middlesex Opportunity Council - Crossroads  
Southern Middlesex Opportunity Council - Safe Haven  
Southern Middlesex Opportunity Council - Turning Point  
United Way of Tri-County - Pearl Street Cafe  
United Way of Tri-County - Pearl Street Cupboard

## Hopkinton

Southern Middlesex Opportunity Council - Serenity House

## Hudson

Hudson Community Food Pantry

## Lincoln

Saint Vincent de Paul - Food Supplement Program of Lincoln

## Littleton

Eliot Community Human Services - Mill Road

## Lowell

Central Food Ministry Pantry  
Eliot Community Human Services - Respite Lowell  
Open Pantry of Greater Lowell

## Malden

Bread of Life - Everett Food Pantry  
Bread of Life - Senior Nutrition Outreach  
Bread of Life Food Pantry  
Bread of Life Meals Program

Eastern Middlesex Alcoholism Services  
Emmanuel Baptist Church Food Pantry  
Malden Haitian Church of the Nazarene Food Pantry  
North Shore Assembly of God - Kids Place  
North Shore Assembly of God Food Pantry  
Philadelphie Seventh-Day Adventist Church Pantry  
Philadelphie Seventh-Day Adventist Church Soup Kitchen  
Salvation Army - Mystic Valley Pantry

## Marlborough

Southern Middlesex Opportunity Council - Marlborough Shelter  
United Way of Tri-County - Marlborough Community Cupboard

## Maynard

Maynard Food Pantry  
Open Table - Community Meal  
Open Table Food - Maynard Food Pantry

## Medford

Eliot Community Human Services - Indigo House  
Friends of Francis Food Pantry  
Heading Home, Inc. - Medford Family Life Education Center  
Saint Vincent de Paul - Saint Raphael's Food Pantry  
Unitarian Universalist Church Pantry

## Melrose

First Baptist Church - Pantry of Hope

## Natick

A Place to Turn  
Natick Service Council Food Pantry

## Newton

Centre Street Food Pantry

## North Billerica

Twelve Step of New England - North Billerica

## North Reading

International Family Church - Seeds of Love  
North Reading Food Pantry

## Northborough

Baptist Convention of New England - Disaster Relief

## Pepperell

PACH Outreach

## Reading

EMARC Food Pantry  
Reading Clergy Association - Reading Food Pantry

## Somerville

Caspar - Men's Residences  
Catholic Charities - Somerville  
Community Resources for Justice - Somerville Transitional Shelter  
Elizabeth Peabody House Food Pantry  
International Ministry Food Pantry  
Missionary Church of The Haitian Community Food Pantry

Mystic Learning Center, Inc.  
Saint Patrick Shelter  
Somerville Homeless Coalition - Project SOUP

## Stoneham

Adventist Community Services Food Pantry

## Stow

Stow Food Pantry

## Sudbury

Sudbury Community Food Pantry

## Tewksbury

CAB Health & Recovery Services - Transitions

## Townsend

Townsend Ecumenical Outreach

## Waban

Newton Food Pantry

## Wakefield

Eliot Community Human Services - Lafayette Place  
Wakefield Interfaith Food Pantry

## Waltham

Hurley House, Inc.  
JF&CS Family Table  
Middlesex Human Service Agency - Bristol Lodge Meals  
Middlesex Human Service Agency - Bristol Lodge Men's & Women's Shelter  
Middlesex Human Service Agency - Bristol Lodge Pantry  
Middlesex Human Service Agency - Mary's House  
Sacred Heart Church Food Pantry - Waltham  
Salvation Army - Waltham Meals  
Salvation Army - Waltham Pantry

## Watertown

Saint Patrick's Food Pantry - Watertown

## Wayland

Celebration International Church

## Woburn

Anchor Baptist Church Pantry  
Twelve Step of New England - Woburn  
Woburn Council of Social Concern

## NANTUCKET COUNTY

### Nantucket

Nantucket Interfaith Council - Nantucket Emergency Food Pantry

## NORFOLK COUNTY

### Braintree

Braintree Community Food Pantry  
Braintree Holidays / Friends, Inc. - Food Pantry  
Braintree Holidays / Friends, Inc. - Marge Crispin Center



# Member Agencies

## Brookline

Brookline Emergency Food Pantry  
Hebrew Rehabilitation Center for the Aged - Weinberg Meal Program

## Canton

Canton Area Helpline, Inc.  
Salvation Army - Disaster Relief

## Dedham

Dedham Food Pantry

## East Weymouth

Weymouth Council for the Hungry

## Foxborough

Foxboro Discretionary Food Pantry

## Franklin

Franklin Food Pantry

## Holbrook

Brookville's Basket

## Medway

Evangelical Congregational Society in Medway - Medway Village Food Pantry  
Medway Food Pantry

## Milton

Concord Baptist Church  
Milton Community Food Pantry

## Needham

Charles River Association for Retarded Citizens, Inc. - Mountain House  
Needham Community Council Food Pantry

## Norwood

Norwood Ecumenical Food Pantry

## Plainville

Living Bread Food Pantry

## Quincy

Esther R. Sanger Center for Compassion - Faith Covenant Meal  
Esther R. Sanger Center for Compassion - Quincy Crisis Center Pantry  
Father Bill's & MainSpring - Father Bill's Place  
Helping Hands Essentials Pantry  
Interfaith Social Services, Inc.  
Pine Street Inn - Anchor Inn  
Quincy Community Action Programs, Inc. - Emergency Food Center  
Salvation Army - Quincy Food Pantry  
South Shore Recovery Home  
Volunteers of America - Casa Isla Short-term Treatment and Revocation Center  
YMCA - Germantown Neighborhood Food Pantry

## Randolph

Ben-Emmanuel Pantry  
Beraca Evangelical Baptist Church  
Friendly Food Pantry of Randolph

## South Weymouth

Bay Cove - New Hope  
Bay State Community Services - Survival Shelter  
Project Turnabout

## Stoughton

Immaculate Conception Parish Food Pantry  
United Methodist Church - Ilse Marks Food Pantry

## Westwood

Westwood Council on Aging

## PLYMOUTH COUNTY

## Abington

Saint Vincent de Paul - Abington Food Pantry

## Bridgewater

Saint Vincent de Paul - Saint Thomas Aquinas

## Brockton

BAMSI - H.I.V. Case Management Program  
Brockton Assembly of God  
Brockton Temple Seventh - Day Adventist Food Pantry  
Catholic Charities South - Brockton Pantry  
Charity Guild Food Pantry  
Father Bill's & MainSpring - MainSpring House  
Food for Friends Pantry  
Full Gospel Tabernacle Food Pantry  
Gethsemane Seventh-Day Adventist Church Pantry  
Guardian Center  
Lincoln Congregational Church  
Mount Moriah Emergency Food Program  
Mount Moriah Soup Kitchen  
Old Colony Y - Boys Sheltercare  
Saint Edith Stein/Saint Vincent de Paul Food Pantry  
Saint Vincent de Paul - Saint Colman's Food Pantry  
Salvation Army - Brockton Adult Rehabilitation Center  
Salvation Army - Brockton Pantry  
Teen Challenge Ministry Center  
The Table at Father Bill's & Mainspring  
Trinity Baptist Church - Manna Meals Program

## Duxbury

Crossroads for Kids

## East Bridgewater

East Bridgewater Food Pantry  
Saint Vincent de Paul - St. John's East Bridgewater

## East Wareham

Family Pantry - Damien's Place

## Halifax

Saint Vincent de Paul - Our Lady of the Lake

## Hanson

Hanson Emergency Food Pantry

## Hingham

Hingham Interfaith Food Pantry

## Hull

Wellspring Multi-Service Pantry

## Kingston

Careworks Ministry Food Pantry  
Plymouth Coalition for the Homeless, Inc.  
Saint Vincent de Paul - Saint Joseph's Kingston Food Pantry

## Manomet

Saint Bonaventure Parish-Fund for the Needy

## Marshfield

Marshfield Food Pantry

## Middleboro

The Nathan Hale Foundation - Middleboro Food Pantry

## Middleborough

Central Baptist Church - Love in Action  
Central Congregational Church  
Saint Vincent de Paul - Sacred Heart Middleboro

## Onset

Heart N' Soul Soup Kitchen

## Plymouth

Anchor House  
Blessed Kateri Tekakwitha Food Pantry  
Christ Church Outreach  
Eliot Community Human Services - Team Works  
Saint Vincent de Paul - Father Sweeney Pantry  
Saint Vincent de Paul - Saint Peters  
Salvation Army - Plymouth Meals  
Salvation Army - Plymouth Pantry  
South Shore Community Action Council - Emergency Assistance Food Program  
South Shore Community Action Council - South Shore Head Start  
The Nathan Hale Foundation - Plymouth Food Pantry

## Rockland

Rockland Emergency Food Pantry  
Saint Vincent de Paul - Holy Family Pantry

## Scituate

Scituate Church Pantry

## South Easton

My Brother's Keeper Food Pantry

## Wareham

Good Shepherd's Table  
Good Shepherd's Table Food Pantry  
Saint Vincent de Paul - Food Pantry of Wareham  
St. Patrick's Table

## West Bridgewater

West Bridgewater Food Pantry

## Whitman

Saint Vincent de Paul - Whitman Food Pantry

## SUFFOLK COUNTY

## Allston

Area Planning Action Council - Allston-Brighton

## Boston

ABCD - North End West End Neighborhood Services  
ABCD - North End/West End Pantry  
AIDS Action Committee Peer Support Drop-In  
American Red Cross - Boston Pantry  
American Red Cross - Mobile Market Bay Cove - Walnut House  
Boston Health Care for the Homeless Program - Barbara McInnis House  
Boston Medical Center - Elders Living At Home Program  
Boston Medical Center Food Pantry  
Boston Rescue Mission - Food Pantry  
Boston Rescue Mission - Meals Program  
Bridge Over Troubled Waters - Emergency Youth Shelter  
Bridge Over Troubled Waters - Transitional Day Program  
CAB Health & Recovery Services - Boston Treatment Center  
Catholic Charities - El Centro del Cardenal  
Church of the Covenant  
Community Resources for Justice - Sargent House  
Earthen Vessels, Inc.  
Friday Night Supper  
Grant A.M.E. - Self-Help  
Haley House - Food Pantry  
Haley House - Soup Kitchen  
International Institute of Boston Pantry  
Outreach Van Project  
Paige Academy  
Paulist Center - Wednesday Night Supper Club  
Pine Street Inn - Meals Program  
Project Place  
Rice Sticks and Tea - Asian Food Program  
Rosie's Place - Food Pantry  
Rosie's Place - Meals Program  
Saint Francis House, Inc. - Meals Program  
Salvation Army - South End Food Pantry  
Salvation Army - South End Soup Kitchen  
SMILE Pre-School, Inc.  
St. Anthony Shrine - Franciscan Food Center  
The Paulist Center Food Pantry  
Victory Programs - Victory House  
Vietnam Veterans Workshop, Inc. - New England Center for Homeless Veterans  
Volunteers Of America - Rebound  
Women's Lunch Place

## Brighton

ABCD - Allston/Brighton  
Allston - Brighton Food Pantry  
Cradles to Crayons  
Crittenton Women's Union - Hastings House  
Vinfen - DDTC - Brighton

## Charlestown

The Harvest on Vine

## Chelsea

Chelsea Jewish Foundation Food Pantry  
Community Action Programs Inter-City, Inc. - After School Program  
Community Action Programs Inter-City, Inc. - Child Development Center  
Saint Luke's - San Lucas Food Pantry

Saint Luke's - San Lucas Soup Kitchen  
Salvation Army - Chelsea Pantry

## Dorchester

ABCD - Elm Hill Family Service Center  
Bay Cove - Hamilton Street  
Bay Cove - Kit Clark Senior Services Pantry  
Bay Cove - Williams House  
Berea Church Pantry  
Bethel Tabernacle Pentecostal Church  
Boston Hamilton House  
Catholic Charities - Saint Ambrose Family Shelter  
Catholic Charities - Yawkey Center  
Charles Street A.M.E. Church  
Codman Square Health Center  
Codman Square Neighborhood Development Corporation - Franklin Hill Food Pantry  
Dorchester House  
Eglise Baptiste Haitienne  
Emmanuel Temple Church Food Pantry  
Faith Pentecostal Church  
Full Life Gospel Center  
Gladtidings Food Pantry  
Grace Church of All Nations Pantry  
Greater Anointing Church Pantry  
Harbor Health Services, Inc. - Neponset Health Center Food Pantry  
Harvard Street Neighborhood Health Center  
Holy Tabernacle Church  
Interim House, Inc.  
Little Sisters of the Assumption - Paige Academy  
Mary Ann Brett Food Pantry  
Phoenix House - Dorchester Shelter  
Pilgrim Church Community Lunch  
Pilgrim Church Food Pantry  
Project Care and Concern  
Refuge & Relief Ministry  
Rockwood Early Educational Academy  
Saint Mary's Food Pantry  
Saint Matthew's Church Food Pantry  
Salvation Army - Kroc Center After School Program  
Salvation Army - Kroc Center Emergency Food Pantry  
Temple Salem Seventh-Day Adventist Church  
Victory Programs - New Victories  
Victory Programs - Shepherd House  
Zion Temple Church Food Pantry

## East Boston

Crossroads Family Shelter  
Eighth Pole  
Grace Federated Church - Emergency Food Cupboard  
Holy Redeemer Church - Our Daily Bread Pantry  
North Suffolk Mental Health Association, Inc. - Meridian House

## Hyde Park

Hyde Park Food Pantry

## Jamaica Plain

Area Planning Action Council - Jamaica Plain Pantry  
Community Servings  
Middlesex Human Service Agency - Sullivan House  
Saint Vincent de Paul - Our Lady of Lourdes  
Victory Programs - Living and Recovery Community  
Victory Programs - Women's Hope

## Mattapan

Boston Medica Center - SPARK Center  
Boston Medical Center - Healthy Baby, Healthy Child  
Greater Boston Nazarene Compassion Center  
Haitian American Public Health Initiatives  
Voice of Tabernacle Multiservice Center

## Revere

First Congregational Church Pantry

## Roslindale

Roslindale Food Pantry  
Southwest Boston Community Development Corporation - Washington Beech  
The Dimock Center - Sycamore Street

## Roxbury

ABCD - Parker Hill Fenway  
Neighborhood Service Center  
ABCD - South End Neighborhood Action Program  
Askia Academy at Dimock  
Casa Esperanza - Latinas y Ninos Center & Men's Program  
Church of God of Prophecy - Roxbury  
Eliot Congregational Church Food Pantry  
Elizabeth Stone House  
Grace and Hope Mission Food Pantry  
Hope House, Inc.  
Islamic Multi Service Organization  
Omega Men in Action  
People's Baptist Church Food Pantry  
Resurrection Lutheran Church  
Saint Mary of the Angels Food Pantry  
Sojourner House  
St. Katherine Drexel - Warwick House  
The Dimock Center - Detox  
The Dimock Center - My Sister's House  
The Dimock Center - The John Flowers Recovery House  
Tobin Brigham Family Support Program  
Twelfth Baptist Church Food Pantry  
Union United Methodist Church Food Pantry  
United Emmanuell Holiness Church

## South Boston

Cushing House - Gavin Foundation  
Fourth Church Food Pantry  
Gavin Foundation - James F. Gavin House  
Middlesex Human Service Agency - Answer House  
Saint Augustine's Food Pantry  
Saint Vincent de Paul Parish Food Pantry  
South Boston Community Health Center

## West Roxbury

May Behavioral Health - Food Pantry

## Winthrop

Winthrop Community Food Pantry



## Hurricane Sandy Brings East Coast Food Banks Together

In October 2012 Hurricane Sandy hit the United States, causing severe damage throughout the eastern seaboard. Upon determining that the hunger relief agencies we serve had the necessary provisions to provide food to their clients, The Greater Boston Food Bank (GBFB) mobilized to provide support to our sister food banks in the hardest hit areas in the northeast.

Carrying thousands of pounds of food and water, as well as essential cleaning supplies, GBFB trucks and staff delivered provisions to the Connecticut Food Bank, City Harvest Food Bank in New York (photo-above), and the Community Food Bank of New Jersey, ensuring these food banks could continue to support their communities during the storm's aftermath.

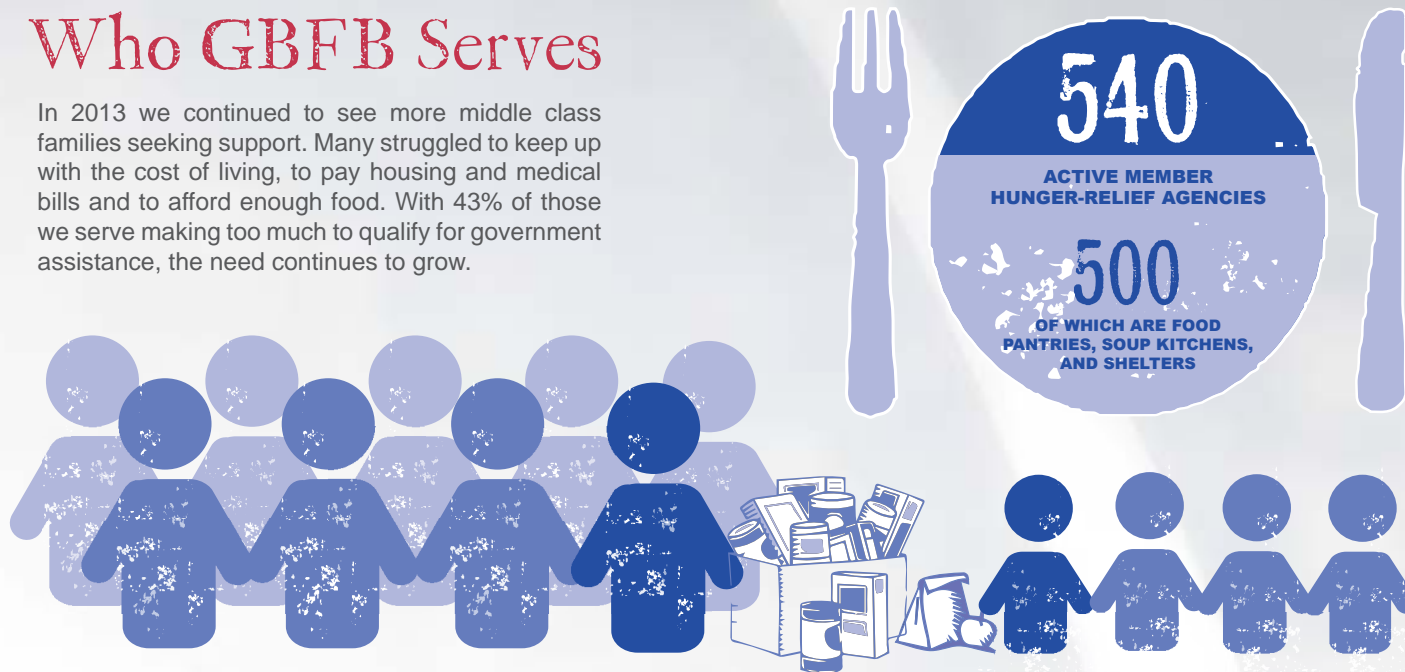
We are proud that the nimbleness and efficiency of our organization, and the responsiveness of our donors, provided the opportunity to support the disaster relief efforts and provide nutritious food to those in need beyond the borders of our service area.

Photo credit: Orestes Gonzalez, City Harvest Food Bank of New York.



## Who GBFB Serves

In 2013 we continued to see more middle class families seeking support. Many struggled to keep up with the cost of living, to pay housing and medical bills and to afford enough food. With 43% of those we serve making too much to qualify for government assistance, the need continues to grow.

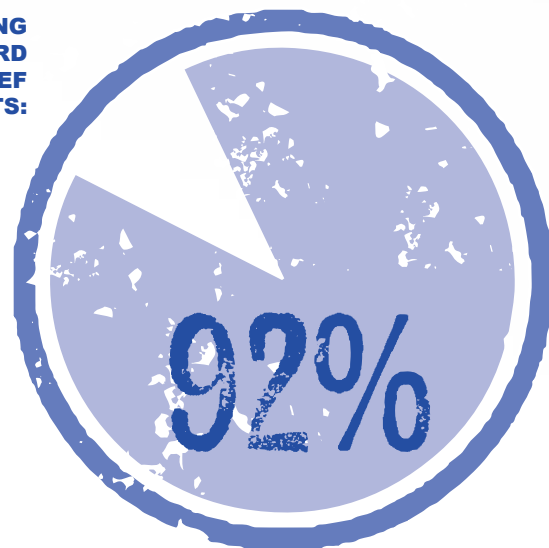


1 in 9 residents of eastern Massachusetts is at risk of hunger. In children, that number is as many as 1 in 4.

## Fundraising

Each year, we are grateful to our longtime supporters and those new to GBFB. Through our relationships in the food industry, GBFB can stretch the value of every dollar donated. Each dollar allows us to buy enough food for three nutritious meals and provides the flexibility to fill our inventory in areas where we may be low.

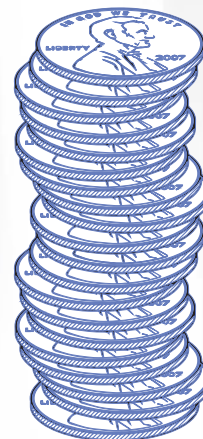
**% OF FUNDS GOING DIRECTLY TOWARD HUNGER RELIEF EFFORTS:**



**\$11.8M**  
32,617 DONORS



**FY12**

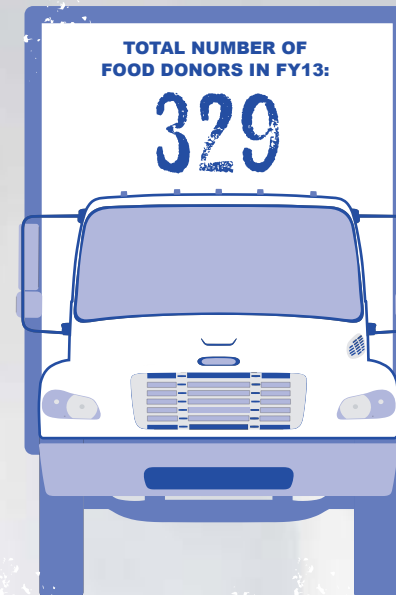


**FY13**

**TOTAL CHARITABLE FUNDS RAISED**

**\$12.4M**  
33,501 DONORS

## Nutrition and Food Distribution



**POUNDS OF FRESH PRODUCE DISTRIBUTED:**

**11M LBS. (9.2M MEALS)**

**FY13**

**POUNDS OF FOOD AND GROCERY PRODUCTS DISTRIBUTED:**

**48M LBS. (40M MEALS)**

**POUNDS OF FRESH PRODUCE DISTRIBUTED:**

**10M LBS. (8.3M MEALS)**

**FY12**

**POUNDS OF FOOD AND GROCERY PRODUCTS DISTRIBUTED:**

**41M LBS. (34M MEALS)**

GBFB takes responsibility for distributing high quality and nutritious foods to support healthy lives and communities. Our nutrition measurement ranking system ensures high nutritional values. Also, GBFB offers nutrition education and meal planning services to our member agencies and clients.

**% OF FOOD INVENTORY THAT MET HIGHEST NUTRITION STANDARDS:**

**FY13 80%**

**FY12 75%**



## Volunteers and Time

Volunteers are critical in reaching our mission to End Hunger Here. Every day, volunteers join us in our 117,000 square foot warehouse to inspect, sort, and pack food to be distributed. Volunteer time and talent saves GBFB \$1 million in labor costs each year.

**5M LBS.**  
OF FOOD SORTED AND PACKED  
**(3.8M MEALS)**

**FY13 25,000 VOLUNTEERS (62,000 HOURS)**

**FY12 20,000 VOLUNTEERS (50,000 HOURS)**



## INDIVIDUAL

### LEADERSHIP CIRCLE

**\$100,000 or more**  
Mr. and Mrs. Joshua S. Boger  
Sadye C. Thall and Abraham Thall Memorial Fund

### \$50,000 - \$99,999

Anonymous (3)  
Randi and Joel Cutler  
Mr. Ted Cutler  
Ms. Marjorie Findlay and Mr. Geoffrey Freeman  
Joyce B. Friedman, Ph.D.  
Mr. and Mrs. Rick E. Roche, Jr.  
Mr. Daniel E. Rothenberg\*  
Joanna and Nigel Travis

### \$25,000 - \$49,999

Bradley and Terrie Bloom  
Professor John E. Core  
Timothy and Carolyn Grimes  
Mr. Peter F. Neumann  
Mr. and Mrs. Peter M. Rosenblum  
Barbara and Ed Scolnick  
Samantha and David Singer  
Ms. Trudi M. Veldman and Mr. Robert Kamen

### \$10,000 - \$24,999

Anonymous (4)  
Mr. and Mrs. Walter Abrams  
Mr. and Mrs. Seth Alexander  
Carol and Howard Anderson  
Mr. and Mrs. Woody E. Bradford, Jr.  
Mr. and Mrs. Robert A. Bralower  
Mr. and Mrs. Ronald G. Casty  
Mrs. Fay D. Chandler  
Mr. Christopher Connolly and Ms. Marjorie Liner  
Mr. and Mrs. Michael Dionne  
Mr. Skef Wholey and Ms. Hilary Donovan  
Mr. and Mrs. Paul Edgerley  
Mr. John F. Fish  
Mr. Noam Freedman  
John and Gail Graham  
Ms. Marci L. Gray and Ms. Ileana Porras  
Gordon and Llura Gund  
Alexander and Martha Huberts  
Mr. Daniel E. Hudgens  
Mr. and Mrs. Leif Jacobsen  
Ms. Minnie P. Joung and Mr. Jai K. Joung  
Ms. Amalie M. Kass  
Mr. Clyde A. Kessel and Ms. Françoise Bourdon  
Mr. Tom Lehrer  
Mr. Anthony S. Lehv and Ms. Robin S. Gross  
Mr. and Mrs. Mark Levin  
Mary-Alice and Ken Loring  
Estate of Amy B. Morrill  
Mr. and Mrs. Leslie Nanberg  
George R. and Sharyn A. Neble  
Mr. and Ms. Harry O'Hare, Jr.  
Mr. J. David Officer and Dr. Marcia Wade  
Ms. Nanette Orme-Johnson  
Dr. and Mrs. Selwyn Oskowitz  
Mr. James C. Pinney  
Ms. Bernadette Rehnert  
William and Sandra Rosenfeld  
Catherine and Jay Russell  
Mr. H. Jay Sarles and Dr. Marilyn Sarles  
Carolyn and Andrew Spangler  
Ms. Jean C. Tempel  
Mr. John Travis  
Mr. Michael J. Travis  
Mr. Thomas M. Walsh\*  
Mr. Harry Wilcox  
Mr. Steven P. Willner  
Hans and Ann Ziegler

### \$5,000 - \$9,999

Anonymous (7)  
Mrs. John Barnard, Jr.  
B. Charles Benson, Jr. and Michele Shindelman  
Mr. and Mrs. Allen H. Berkman  
Ms. Eloise Biscoe  
Stephen and Maria Blewitt  
Dr. Stephen J. Blyth and Mrs. Anita M. Gajdecki  
Mr. Ernest A. Boch, Jr.  
Mr. William H. Brack and Ms. Jessica A. Ladd  
Suzanne and Mike Brennan  
Mr. William N. Buffett and Ms. Susan Kennedy  
Mr. and Mrs. Matthew C. Buscone  
Mr. and Mrs. Paul Carbone  
Mr. and Mrs. Larry Carsman  
Robert and Susan Carson  
Irwin and Roberta Chafetz  
Julian and Barbara Cherubini  
Mr. and Mrs. Jeffrey Choney  
Mr. Jonathan Crowell  
Mr. and Mrs. Stuart Davies  
M. W. Sam and Peggy Davis  
Mr. Christopher K. Davis  
Ms. Laurie T. Dewey  
Ms. Eileen M. Dineen  
Mr. and Mrs. F. N. Doherty  
Mr. and Mrs. David Druley  
Mr. and Mrs. A. Lovell Elliott  
Mr. Mark Engerman and Ms. Jill Steele  
Mr. Stephen Fair and Ms. Rebecca Kirk  
Mr. William Farrell  
Judith A. and Lionel P. Fortin  
Mr. and Mrs. Joseph Gehret  
Mr. John V. Gibson  
Mr. and Mrs. Charles K. Gifford  
Dr. and Mrs. Ronald G. Goldberg  
Ms. Lynn Goldsmith and Mr. Peter Mark  
Ms. Elizabeth Gorman and Mr. Mark Kritzman  
Dr. Gary Gottlieb and Dr. Derri L. Shtasel  
Mr. Alan Guth  
Mr. and Mrs. Aziz Hamzaogullari  
Mrs. Francis W. Hatch  
Donald and Patricia Hillman  
The Honorable Richard J. Israel and Mrs. Lana Israel  
Ms. Pamela Kohlberg and Mr. Curt Greer  
Dr. Nobuko Kuhn  
Mark LaCamera  
Mr. Eric Larson  
Mr. Gregory C. Latino\*  
Peter S. Lawrence and Pamela C. Warren  
Estate of Beatrice J. Leary  
John and Michelle Letcher  
Mark and Sheri Levine  
Ms. Charlotte R. Lewis  
Mr. and Mrs. Philip R. Licari  
Ms. Kathryn Link and Mr. Alfonso Caramazza

Mr. and Mrs. James Lovas  
Ms. Stephanie Lovell  
Mr. and Mrs. James D. Mac Intyre  
Joanne and Thomas Magliozzi  
Ms. Mary E. McCoy  
Mr. Kevin T. McCusker  
Mr. and Mrs. Duncan McFarland  
Kimberly and Mark Notkin  
Dr. Gilmore O'Neill and Ms. Stella Drummand  
Ms. Rowan O'Riley  
Mr. Subash B. Pereira  
Mr. Craig Peskin  
Ms. Tiziana Polizio  
Susan and Jim Rapoport  
George and Marina Reiser  
David and Kim Robertson  
Naomi and Mathias Rosenfeld  
Ms. Elizabeth Skavish and Mr. Michael Rubenstein  
Rand Spero and Barbara Hall  
Ms. Lisa S. Lenon and Mr. William Stanton  
Ms. Paula C. Swartz  
Mr. and Mrs. Barry Sylvestsky  
James and Carol Taiclet  
Ms. Clara Wainwright  
Mr. Thomas Walkey  
Seth Weinroth and Dina Gardner-Weinroth  
Mr. and Mrs. Evan B. Weisman  
Ms. Rebecca Parkhill and Mr. Robert Willett  
Ms. Sally Woodhouse

### \$2,500 - \$4,999

Anonymous (6)  
Mr. Richard Amirault  
Deborah and Henry Ancona  
Dr. and Mrs. Jason Arandia  
Mrs. Dorothy Baldini  
Mr. and Mrs. John F. Biagiotti  
Mr. Joseph Biancalana  
Mr. Richard A. Bishop, Jr.  
Michael and Alison Bonney  
Bob and Karen Boudreau  
Thomas and Elisabeth Boyle  
Ms. Barbara E. Breitwieser  
Katherine Knox Brobeck  
Ms. Jane Brooks Robbins and Ms. Christina Widing-Jonsson  
Mr. and Mrs. Lawrence I. Buell  
Mr. James E. Buggie  
Mr. Andrew Bullock  
Robert and Elizabeth Burke  
Ms. Susan O. Bush  
Mr. and Mrs. Michael Busnach  
Ms. Bridget K. Callahan  
Mr. John T. Campbell and Ms. Susanna Peyton  
Andrea and Eric Carlson  
Mr. Todd W. Chapin  
Mr. Henry G. Chen  
Ms. Alice K. Choi  
Ms. Marla Choslovsky and Mr. Paul Greenberg  
Mr. Matthew T. Ciaschini  
Mr. and Mrs. Charles Clifford  
Ms. Norma Colletta  
Barbara and James Conen  
Cynthia and Oliver Curme  
Catherine D'Amato and Debbi P. Ford  
Mr. Jeffrey Davidson  
Michael and Denyse Densmore  
John and Pat Deutch  
Ms. Katherine K. Dibble  
Mr. James J. Dillon and Ms. Martha Stone Wiske  
Mr. and Mrs. Joseph M. Ditkoff  
Mr. David Donovan

Ms. Mary Teresa Driscoll  
Hazel and Michael Durand  
Mr. Richard J. Emmett  
Mr. and Mrs. James A. Ermilio  
Mr. and Mrs. James W. Evans  
Mr. George W. Fenn and Mrs. Paige M. Arnof-Fenn  
Mr. and Mrs. David R. Ferry  
Mr. Joseph Flanagan  
Dr. Samuel Forman and Dr. Yulika E. Forman  
David and Anne Gacioc  
Mr. Eric M. Gibber  
Mrs. RoseAnn C. Gibbons  
Mr. Luke Gilroy  
Carol R. and Avram J. Goldberg Fund  
Carol and Avram Goldberg  
Deborah Goldberg and Michael Winter  
Mr. Robert J. Goldfarb  
Ms. Bonnie L. Gossels  
Mr. and Mrs. Werner F. Gossels  
Ms. Vicary M. Graham  
Cindy and Rubin Gruber  
Allen and Alexis Hamdan  
David and Betsy Harris  
Dr. Terence Jay Harrist  
Mr. John Hechinger  
George and Regina Herzlinger  
Mr. Keith N. Howell, Jr.  
Mr. Hans P. Huber  
Mr. and Mrs. John C. Isley  
Mr. and Mrs. Marc T. Jobin  
Dr. Saj-Nicole A. Joni  
Ms. Joanne Kane  
Paul and Ann Kaplan  
Dr. Edwin Karat  
Anwar and Catherine Kashem  
Ms. Maggie E. Keefe  
Mr. Scott Kennedy  
Mr. Mian Khalil  
Mr. Tom Kier  
Leon and Jane Kinkow  
Ms. Janice M. Klunder  
Mr. James T. Knowles  
Mr. James Koliha  
Barry and Laura Korobkin  
Mr. and Mrs. John M. Kucharski  
Mr. and Mrs. Geoffrey L. Kurinsky  
Mr. Ted Kurland  
Dr. Sew-Leong Kwa  
Mr. Philip Ladd  
Mr. and Mrs. John J. Langan  
Ms. Katherine Lapp  
Ms. Christine D. Leslie  
Mr. and Mrs. Nathan Levenson  
Mr. and Mrs. Mark J. Licari  
Eric D. Lichter, M.D.  
Mr. Norman U. Lind  
Mr. Christopher A. Lisy  
Mr. and Mrs. George H. Lohrer  
Mr. Ronald D. Lyberger  
Mr. Patrick St. A. Lyn  
Mr. Gianni Marostica  
Ms. Jeanne F. McCann  
Mr. Michael McCauley  
T.K. McClintock and Emily McClintock  
Mr. Harry B. McCormick  
Mr. Henry McEuen  
Mr. Tim McKenna  
Ms. Susan A. McLeish  
Mr. and Mrs. Brad Meslin  
Mr. and Mrs. David Moir  
Ms. Barbara L. Moore  
Mr. Alan Newsome  
Alvin and Marcia Newstadt  
Robert and Colleen Nicewicz  
Mr. Christian Nolen and Ms. Susan Denny  
Ms. Pam J. Norley  
Ms. Susan L. Nugent

### \$2,500 - \$4,999 (cont.)

Mr. James J. O'Brien  
Mr. Jay D. Orlander and Ms. Anna J. Mitus  
Jay and Lou Paap  
Jeffrey and Nancy Paige  
Mr. Robert H. and Mrs. Kathleen Coyne Parlee  
Ms. Susan K. Peaslee  
Mr. Thomas Peckham  
Mr. Markus Penzel and Ms. Catherine Corman  
Mr. and Mrs. Lon Povich  
Mr. and Mrs. Verne Powell  
Mr. Daniel Quinn and Mr. Giff Gall  
Sidney R. and Esther V. Rabb Fund  
Deborah Goldberg and Michael Winter  
Ms. Anastasia E. Raczek  
Mr. Christopher Reed  
Mr. Brian Reh  
Mr. Kennedy P. Richardson  
Ms. Ana Rito  
Dr. Oliver Rosen  
Ms. Renee Rushnawitz  
Dr. David B. Sarrazin  
Mr. and Mrs. R. David Schelzi  
Stanley and Kay Schlozman  
Mr. and Mrs. William J. Schnoor  
Ms. Monica R. Shah  
Mr. and Mrs. Ryan J. Shawgo  
Mr. Daniel H. Sheingold  
Jeffrey and Betty Siegel  
Ms. Ellen Simons  
Mr. Hong Sio  
Mr. Donald S. Sisson  
Mr. and Mrs. Andrew Smock  
Mr. Edward H. Sonn  
Mr. Onofrio Sozio  
Lisa and Troy St. Onge  
Steve and Pamela Stroud  
Mr. Alan Su and Ms. Holly Dail  
Joan and Steve Subrin  
Ms. Caroline A. Taggart and Mr. Robert J. Sachs  
Ms. Patricia M. Thomas  
Michael and Sara Torok  
Mr. and Mrs. Mark Tricoli  
Dr. Sergey Vasilyev  
Ms. Irene Weigel  
Sandra and Barnet Weinstein  
Ms. Adele E. Wick  
Mr. Sean H. Wiedemann  
Ms. Christie Wiley  
Mr. Alvin T. Wilkinson  
Mr. and Mrs. Richard Wilson  
Mr. Stephen Van R. Winthrop and Ms. M. Jane Williamson  
Mr. and Mrs. Peter K. Wirth  
Ms. Monika A. Wirtz  
Mr. John G. Wolff  
Mr. Christopher F. Zurn

### \$1,000 - \$2,499

Anonymous (21)  
Mr. Anirudha Accanoor  
Mr. Mark A. Aikens  
Mr. Jeff Alexander  
Paul and Evelyne Alexander  
Mr. and Mrs. William E. Aliski  
Ms. Allison Allen and Mr. Christopher Jones  
Dr. Ann and Mr. Ramon Alonso  
Ms. Candy Altman  
Dr. Susan C. Alvey  
Mr. Raymond T. Ande  
Ms. Barbara J. Anderson  
Mr. Anthony Andreottola  
Matthew and Gillian Anestis  
Mr. Wayne S. Antion

Jeffrey and Laura Arena  
Patrick and Pamela Ariniello  
Mr. and Mrs. Frank Armo  
Mr. Brian Aronson  
Ms. Martha L. Arthur  
Mr. Edward Arthur  
Mr. Michael Artin  
Ms. Susan R. Avery  
Mrs. Carol Ayotte  
Mr. Christopher Babbitt  
Mr. Robert William Babcock and Ms. Judith Friedman Babcock  
Mr. and Mrs. Charles Bachman  
William and Jean Bachovchin  
Ms. Alyssia Bailey  
Mrs. Lotte Bailyn  
Ms. Catherine Baisly  
Ross and Frances Baldessarini  
Mr. Richard Ballo  
Beverly and David Barney  
Mr. and Mrs. Daniel J. Barrett  
Mr. Julius Baskys  
Mr. and Mrs. Mark R. Batten  
Mr. and Mrs. Anthony Battit  
Ms. Nancy Baym  
Ms. Bonnie Baynes St. Germain  
and Mr. Ian St. Germain  
Mr. and Mrs. Robert Bayston  
Ms. Georgette Beck  
Mr. and Mrs. Thomas Beck  
Mr. James Becker and Ms. Aber Lynch  
Mr. Kevin Beggs  
Robert Brown and Elaine Beilin  
Mr. Nicholas G. Belezos  
Mr. Edward Belove and Ms. Laura Roberts  
Dr. and Mrs. Ross Berbeco  
Noah and Jeanette Berger  
Jacques and Sylvia-Jean Bergeron  
Ms. Mary L. Bergeron  
Mr. Philip J. Berk  
Mrs. Nil Berkman-Wright  
Mr. and Mrs. Paul Berlinguet  
Mr. George Bernet  
David and Deborah Bernstein  
Mr. James Berriman  
Ms. Laura Bethard  
Ms. Alison Bibbins Ward  
Mr. Scott A. Biller and Ms. Christine L. Masi  
Mrs. Sarah Biller and Mr. Dean Gekas  
Mr. Bradley Black  
Mr. and Mrs. Gary Blank  
Barry T. Milanese and Cheryl A. Blanton  
Mr. Mark Blecher  
Ms. Adrienne Bolger  
Richard and Maureen Bolger  
Vivian and Russ Bolt  
Mss. Alexandra and Stephanie Borns-Weil  
Dr. and Mrs. Don Boroson  
Mr. Brian E. Boyle  
Mr. Michael Bradley  
Mr. Craig Brandt  
Mr. Niall Brennan  
Mr. David Bresler  
Ms. Karen S. Bressler and Mr. Scott Epstein  
Dan and Mikael Bristow  
Mr. William Brockman  
Walter and Rose Brooks  
Dr. Jeffrey S. Brown and Dr. Rachel Haft  
David and Deborah Brown  
Ms. Jane A. Brown  
Ms. Kathleen R. Browne  
Mr. R. Scott Buchanan  
Robert and Rene Buchanan  
Mr. Oliver E. Buckley

Christopher and Heather Buder  
Rhea and Allan Bufferd  
Mr. Christopher A. Bunker  
Ms. Cinta Burgos  
Mr. Matthew Burkley  
Ms. Claire L. Cadigan  
Mr. Howard Cahn  
Ms. Karen Canisius  
Mrs. Carol Ayotte  
Mr. Rebecca Cannon  
Mr. and Mrs. John Capone  
Ms. Margot E. Carleton and Mr. Peter R. Martin  
Mr. Ian Carnathan  
Mr. and Mrs. Paul Caron  
Mr. Peter Carroll  
Ms. Eileen M. Casey  
Mr. James Casey  
Mrs. Gladys R. Catterton  
Thomas Cavin  
Mr. Joseph T. Cefalo, Jr.  
Dinesh and Dharmender Chandok  
Ms. Amelia M. Charamba  
Mr. and Mrs. Anthony Charland  
Ms. Eunice Charles  
Mr. and Mrs. Robert A. Charpie  
Mr. and Mrs. Richard E. Charron  
Mr. Daniel Chiacchia  
Mr. David Chilinski  
Mr. and Mrs. John Chobanian  
Mr. Michael F. Dunn and Ms. Suzanne Christensen-Dunn  
Ms. Rhoda Christmas  
Ms. Michelle Christy  
Ms. Sharon Church  
Ms. Clemency Coggins  
Mr. Robb Cohen  
Mr. and Mrs. Kenneth H. Colburn  
Mr. Addison Cole  
Mr. James M. Coleman  
Ms. Tracy Coleman  
Brian and Paula Collins  
Mr. and Mrs. Jeffrey M. Collins  
Mr. and Mrs. Wade Collins  
Ms. Shahar Colt  
Hannah and Kenmore Commass  
William and Susan Coney  
Mr. Jeff Conklin  
Mr. and Mrs. John B. Connors  
Michele and John Conroy  
Mr. Matthew Consigli  
Ms. Maureen L. Cook  
Robert C.B. Cooper and Miriam E. Leaser  
Mr. and Mrs. Howard M. Cooper  
Mr. and Mrs. Ernesto Corinaldesi  
Jeff and Nancy Corthell  
Ms. Julia Satti Cosentino  
Mr. and Mrs. John H. Costello  
Judith and Maurice Coulon  
Ms. Anne S. Covert  
Mr. and Mrs. Russell S. Cox  
Ms. Candace L. Cox  
Ms. Deanna Coyle  
Mr. J. Scott Craig  
Mr. James Creelman  
Sidney and Egil Croff  
Mr. Ed Crowe and Ms. Kathleen Manning  
Mr. David Crowley  
Ms. Sarah Cummer  
Gerald and Jeanne Curtis  
Mr. and Mrs. Taylor Curtis  
Mr. George L. Curtis and Ms. Deanna Yameen  
Mrs. Eugenie Dahlstrom  
Barbara and Arthur D'Angelo  
Mr. Bruce B. Daniel and Ms. Susan M. Dacey  
Mr. Troy E. Daniels

Mr. Craig M. Davis  
Mrs. Joanne Davis  
Ms. Elvira Defalco  
Ms. Margaret Degou  
Mrs. Joan M. Delaney  
Ms. K. Ruth DeLay  
Mr. Alfred Demaria and Ms. Susan M. Case  
Mr. and Mrs. Peter Denison  
Mr. Bryce Denney  
Mr. John Devasia  
Mr. and Mrs. John Deyst  
Mr. Donald R. Dickinson  
Mrs. Rebecca Dijulia  
James and Nikki Dinardi  
Ms. Michele DiPalo and Mr. Graeme Williams  
Mr. and Mrs. Lance Dodes  
Mr. and Mrs. Raymond R. Doherty  
Ms. Amy Doherty  
Ms. Ellen M. Donahue  
Mr. and Mrs. Michael Donovan  
Mr. and Mrs. John L. Donovan  
Ms. Dian Doody  
J.B. and Tiffany Dowd  
Ms. Catherine A. Dowling  
Ms. Elizabeth B. Duggan  
Dr. Catherine G. Dulac  
Ms. Cecilia E. Dunn  
Sheila and Andrew Dunphy  
Mr. and Mrs. Francis W. Eaton  
Ms. Barbara V. Echeverria  
Ms. Jennifer Eckert  
Ms. Emily A. Ehrenfeld and Mr. Gary Valaskovic  
Mr. P. Nicholas Elton and Mrs. Barbara Steen-Elton  
Mr. and Mrs. Steven Emery  
Margaret L. Engel  
Mr. John L. Ennis  
Bruce and Becky Epstein  
Mr. Michael J. Epstein  
Ms. Jill L. Eurich and Ms. Carol Lazarus  
Ms. Winifred F. Ewing  
Mr. and Mrs. Daniel Fabricant  
Mr. Andrew J. Falender  
Dr. Andrew S. Levey and Dr. Roberta M. Falke  
Mr. Joseph F. Fallon  
Ms. Joan K. Falvey  
Ms. Susan O. Farrell  
Ms. Kathleen M. Farren  
Ms. Susan E. Farris and Mr. Ivan O'Connor  
Mr. and Mrs. John A. Fassak  
Karim and Leila Fawaz  
Barbara and Martin Feldzon  
Ms. Kathleen N. Ferranti  
Ms. Maureen C. Fertitta  
Jade and Jeffrey Figueiredo  
William and Denise Finard  
Mr. Avi Finder  
Mr. Robert P. Kelly\*  
Dr. and Mrs. David Finn  
Ellen and Franklin Fisher  
Mr. William M. Fitzgerald  
Mr. Daniel J. Fitzpatrick  
Carl and Gail Fleischer  
Christopher P. Flynn  
Ms. Priscilla Foley  
Mr. and Mrs. Daniel Fong  
Kenneth and Joyce Fowler  
Mrs. Martha J. Frahm, Esq.  
Ms. Laurie Francis  
Dr. and Mrs. Matthew Frank  
Ms. Sara Franks-Allen  
Mr. Burt B. Freedman  
Mr. Robert Freehart  
Mr. and Mrs. Barney Freiberg-Dale





## INDIVIDUAL \$1,000 - \$2,499 (cont.)

Ms. Elissa Freud  
 Ms. Marian Friedman  
 Mr. John Fritch  
 Mr. David Frost  
 Mr. Christopher Fulton  
 Mr. Chris Gabrieli  
 Ms. Sandra L. Galejs  
 Mr. William Ganong and  
 Ms. Marilyn Newman  
 Mr. Charles Garcia  
 Mr. and Mrs. John E. Garland  
 Bink and Louisa Garrison  
 Mr. Brevard S. Garrison and  
 Ms. Regina M. Snyder  
 Penny and Richard Garver  
 Ms. Judith L. Gass  
 Ms. Liora Gates  
 Dr. Mary Gelrud  
 Mr. and Mrs. Leigh M. Gelsner  
 Mr. Thomas A. Gendreau  
 Mr. and Mrs. Michael Gerstein  
 Mrs. Marion Giammarinano  
 Ms. Julie Napolitan and  
 Mr. Mark Gibson  
 Harold and Jana Giguere  
 Gina Maniscalco and Donald Gilligan  
 Mr. J. E. Gilstrap  
 Peter H. and Kerstin Glick  
 David Godkin and Pamela Haran  
 Mr. Matthew Goehert  
 Mr. and Mrs. James Goldinger  
 Mr. Ronald A. Gomes  
 Ms. Laura Goode  
 Mr. Reed S. Goodman  
 Mr. Dana M. Gordon  
 Ms. Susan Gordona  
 Mr. Michael Goroff and  
 Ms. Jill Friedlander  
 Ms. Anna C. Gossett  
 Mr. Timothy Grady  
 Ms. Elizabeth Grady and  
 Mr. Duncan Spelman  
 Dr. and Mrs. Paul E. Gray  
 Mr. Daniel Green and  
 Ms. Jamie Scarborough  
 Vivian and Sherwin Greenblatt  
 Ms. Elizabeth H. Gregg  
 Ms. Marjorie Greville  
 Mr. Edmond C. Griffin  
 Mr. Edward Grise  
 Dr. Jerome E. Groopman and  
 Ms. Pamela I. Hartzband  
 Mr. and Mrs. Jay M. Grossman  
 Mr. Timothy J. Groves  
 Ms. Susan Gruber  
 Ms. Josephine Gump  
 Lauren and Christopher Guthrie  
 Ms. Natalie Z. Haar  
 Ms. Lucy Hadden  
 Mr. Bryan Haley  
 Mrs. Alice N. Hall  
 D. Gibson and Susan Hammond  
 Mr. Dean Hanley  
 Ms. Linda Hanson and  
 Mr. Jonathan F. Wallach  
 Mr. Drew Harrington  
 Mr. Adrian Harte  
 Mr. Antoine G. Hatoun and  
 Ms. Andrea G. Levitt  
 Ms. Sara-Jane Haven  
 Mr. Mark J. Hebert  
 Mr. Jeffrey L. Heidt and  
 Ms. Myra J. Green  
 Ms. Chrystine Heier  
 Ms. Elisabeth Heinicke  
 Dennis and Diane Hemond  
 Mr. Gilbert Hennessey  
 Susan and Michael Herron  
 Marilyn and James Heskett

Mr. John Hession  
 Ms. Rosemary Higginson  
 Mr. Edwin K. Hines  
 Carlos and Lois Hirschberg  
 Mr. Kalon Ho  
 Robert and Laura Hockett  
 Mr. Andreas Hohmann  
 Ms. Karen Holmes Ward  
 Ms. Eileen Holzman  
 Kessely and Theodore Hong  
 Ms. Priscilla L. Hook  
 Mr. Peter E. Hornstra  
 Mr. Paul Howard  
 Ms. Pamela Hoyle  
 David and Linda Hoyt  
 Mr. Richard E. Hughes  
 Mrs. Siobhan Hullinger  
 Mr. and Mrs. William S. Hurley  
 Lincoln and Jasper Hyatt  
 Mr. Peter C. Isakson and  
 Ms. Helen C. Hamman  
 Ms. Suzanne Isenberg and  
 Mr. Alessandro Mina  
 Ms. Lois D. Isenman  
 Mr. Howell E. Jackson and  
 Ms. Elizabeth V. Foote  
 Ms. Elizabeth Jakubowski  
 Ms. Teresa M. James  
 Dr. and Mrs. Francis M. James  
 Mr. William Jannen, Jr.  
 Joel and Amy Janovsky  
 Joanne Jaxtimer and Michael Barry  
 Mrs. Pauline E. Jenkins  
 Robert and Amy Job  
 Mr. Maurice P. Joffe  
 Mr. and Mrs. Paul C. Johnston  
 Mr. William A. Johnston  
 Mr. Joseph Jonas  
 Emily and Ross Jones  
 Mr. Jeff Barrell and Ms. Candace Jones  
 Mr. David M. Jones and  
 Ms. Allison K. Ryder  
 Ms. Susy Jordan  
 Mr. Jeremiah Jordan  
 Jaffe Jorgensen  
 Dr. Tiffany Joseph  
 George and Virginia Jurkowich  
 Mr. Aditya Kamath  
 Chris and Lisa Kaneb  
 Ms. Angela Kantor  
 Mr. Paul E. Kaplan  
 Ms. Lynn Kappelman  
 Mrs. Kumud Kaur-Singh  
 Robert and Cynthia Keefe  
 Reverend Diane Keith-Lucas and  
 Mr. Jacob Montwieler  
 Art and Pamela Kelleher  
 Mr. James Keller  
 Mr. and Mrs. Steven P. Kemp  
 Paul and Terese Kennealy  
 Dr. and Mrs. Stephen V. Kenney  
 Ryan and Jaime Kim  
 Mrs. Emily E. King  
 John and Judy Knutson  
 Ms. Dorothy Koerner  
 Mr. Allan S. Kohrman and  
 Ms. Carolyn R. Stone  
 Ms. Lauren Komarow  
 Mr. Tyler Korff  
 Mr. Steven E. Kosto  
 Mr. Fedor Kouranov  
 Dr. Matthew Kramer and  
 Ms. Laurie Stalker  
 Mark and Rachel Krebs  
 Ms. Ruby Krouwer  
 Adam and Jennifer Krueckeberg  
 Mr. and Mrs. Michael A. LaColla  
 Caroline and Andrew Lamb  
 Mr. Eugene Lambert  
 Drs. David and Elizabeth Landis

## \$1,000 - \$2,499 (cont.)

Mr. Kevin Lang and Ms. Shulamit Kahn  
 Ms. Jeanne Larkin-Henry  
 Mr. and Mrs. Lou LaRocca  
 Ms. Sandra Lashway  
 Mr. Richard Lavey  
 Ruth and Christopher Lawler  
 David and Nancy Leblang  
 Mr. Eric Lee  
 Mr. and Mrs. Kenneth Lee  
 Mr. Lester S. Lee  
 Mrs. Catherine Leen  
 Ms. Susan Lees  
 Mr. and Mrs. Nelson C. Lees  
 Paul and Sheila Lefevre  
 Mr. Paul Milbury and  
 Ms. Heidi M. Lehner  
 Jeffrey and Lisa Leiden  
 Mrs. Lesley Leonhardt  
 Mr. Ryan Lepard  
 Mr. and Mrs. Rufus E. Lester, Jr.  
 Ms. Mary A. Letorney  
 Ms. Rachel E. Letourneau  
 Ms. AnneMarie Levins  
 Ms. J. Ann Levy  
 Mr. Robert L. Lewis  
 Ms. Monica Lewis  
 Mr. William C. Liaw  
 Ms. Patricia M. Libby  
 Mr. Stuart Licht  
 Susan and Walter Lichtenstein  
 Mr. Matthew A. Berlin and  
 Ms. Simone R. Liebman  
 Wilson and Yuen Lim  
 SweeCheng and Beo Lim  
 Laura and Christopher Lindop  
 Mr. John N. Little and  
 Ms. Nancy Wittenberg  
 Mr. Robert W. Littlefield  
 Dr. Malia D. Lowe  
 Mrs. Sharon E. Lowe  
 Ms. Naomi Lown and  
 Mr. Marvin Lewiton  
 Ms. Gina Lynch  
 Mr. Yo-Yo Ma and Ms. Jill A. Hornor  
 Mrs. Wendy F. MacGregor  
 Ms. Margaret E. Mack and  
 Mr. John Powell  
 Ms. Lucy G. Mack  
 Kevin and Sharon MacKenzie  
 James and Phyllis Maddox  
 Mr. Warren Magee  
 Ms. Angelika Maher  
 Mr. and Mrs. Jeffrey S. Maimon  
 R. Bradford and Sharon Malt  
 Ms. Nell M. Maluf  
 Mr. Laurence A. Manchester  
 Dr. Sharon Margulies  
 Mrs. Eileen M. Mark  
 Ms. Tiffany Markarian  
 Robert and Cynthia Marr  
 Ms. Mary Martino  
 Mr. and Mrs. Stephen Mastrocola  
 Ms. Christine Matz  
 Mrs. Jacquelyn Mawhinney  
 Ms. Maureen A. McCaffrey  
 Mr. Martin McCarthy  
 Ms. Mary A. McCarthy  
 Mr. Lewis S. McCreary  
 Ms. Carole McCullough  
 Ms. Kathleen A. McDermott  
 James and Carolyn McGarry  
 Mr. Ryan McJunkin  
 Ms. Kathleen McKeown  
 Mr. Andrew W. McKinley  
 Mr. Gregory McLaughlin  
 Mr. Colin McMillen  
 Ms. Kathleen McNeil  
 Ms. Tina McPherson

Bryan and Margaret McQuade  
 Ms. Kathleen McQuiggan  
 Mr. Luis Medeiros  
 Mr. and Mrs. Aires Medeiros  
 Ms. Susan S. Meecker  
 Mr. Werner Meier  
 Mr. Robert Meindl  
 Ms. Mary Jo Meisner  
 Theo and Lisa Melas-Kyriazi  
 Mike Ward and Moe Melchiono  
 Ms. Linda J. Mellor  
 Paul and Robin Melone  
 Mr. Jason Merrill  
 Mr. Sean Metras  
 Dr. Lawrence S. Miller  
 Mr. James S. Miller and  
 Ms. Jill Henderson  
 Dr. Stephen Minicucci  
 Ms. Sandra Larson and  
 Mr. Nicolas A. Minutillo  
 Ms. Karen E. Minyard  
 Ms. Diana Misenti  
 Mr. Kevin P. Mitchell  
 Mr. Bruce E. Molay  
 Ms. Ann J. Molloy  
 Ms. Jean Montagu and  
 Ms. Kyra Montagu  
 Mr. Alexander W. Moore and  
 Ms. Linda M. Antonucci  
 Ms. Beverly J. Morrison and  
 Dr. Coe Agee  
 Ms. Carolyn M. Moss and  
 Mr. Daniel Hawkins  
 Ms. Rachel Mott Keis  
 Mr. and Mrs. Ronald R. Mourant  
 Ms. Maria C. Mucci  
 Mr. William Muccifori  
 Mr. Peter Munkenbeck and  
 Ms. Renata von Tscharnner  
 Mr. Hugh Munoz  
 Mr. John Murphy  
 Mr. Robert J. Murray  
 Mr. and Mrs. Sherif Nada  
 Ms. Jean M. Nauss  
 Mr. David S. Newbower  
 Ms. Marilyn Newman  
 Sean and Kate Newth  
 Mr. Dana Ng  
 Ms. Jennifer D. Nichols and  
 Mr. John Crawford  
 Mr. and Mrs. Randall Nielsen  
 Mr. and Mrs. Robert J. Nobile  
 Mr. James Rosenfeld and  
 Ms. Sharon Nolan  
 Mr. and Mrs. Richard Norman  
 Mr. David B. Northridge  
 Mr. David S. Noymer and  
 Ms. Sandra Puritz  
 Ms. Elianna J. M. Nuzum, Esq.  
 Ms. Jan E. Nyquist  
 Mr. Stephen Ober  
 Ms. Tracy O'Brien and  
 Ms. Michele Waters  
 Mr. Tomas O' Cathasaigh  
 Mr. James O'Connor, Jr.  
 Rebekah and William O'Donnell  
 Herbert and Virginia Oedel  
 Mr. Andrew S. Offit and  
 Ms. Suzanne Altman Offit  
 Dr. Abena Ofori  
 Douglas T. and Jill N. Ogino  
 Mr. Alexander Tedeschi and  
 Dr. Kathryn K. Oh  
 Ms. Paula O'Keefe  
 Mr. and Mrs. Charles Oliver  
 Mr. and Mrs. Harold Z. Ollin  
 Mr. Matthew T. Olson  
 Mr. Gerald P. O'Neil  
 Ms. Anne Page Palmer  
 Ms. Judith M. Palmer  
 Ms. Deborah S. Palmer

Dr. Mary Pantuhova  
 Mr. Iraklis Papachristos  
 Mr. Gregory K. Papazian  
 Mrs. Antonietta Parisi  
 Mr. Matthew Parker  
 Mr. and Mrs. F. Robert Parker  
 Mr. and Mrs. Jeffrey A. Parker  
 Mr. and Mrs. Francis Passavant  
 Brian and Erin Pastuszenski  
 Jay and Dominique Pattin  
 Dr. Nina Paynter  
 Dr. and Mrs. David Pendergast  
 The Penfield Family  
 Ms. Fiona Penman  
 Mr. and Mrs. Louis Pepi  
 Ms. Nicole Peppe  
 Mr. Christopher Petrik  
 Mr. Marc A. Pfeffer and  
 Ms. Marianne Bowler  
 Ms. Hilary Phelan  
 Ms. Katherine Phillips and  
 Ms. Fannie Phillips  
 Mr. Drew Picciafoco  
 Carol and Steven Pieper  
 Ms. Christine V. Pignatiello  
 Ms. Barbara A. Pike  
 Mr. Webster Pilcher and  
 Ms. Sheryl Koenigsberg  
 Thomas and Jennifer Pincince  
 Ms. Linda Pines  
 Mr. and Mrs. Robert Pishkin  
 Ms. Judith Pitney  
 Mr. Robert P. Pitts  
 Mr. and Mrs. Richard A. Platt  
 Philip and Gloria Plottel  
 Dr. and Mrs. John W. Poduska  
 Mr. Mark D. Polin  
 Mrs. Josephine A. Pomeroy  
 Ms. Deborah Z. Porter  
 Christopher and Monique Porter  
 Sashank and Kerry Prasad  
 Dr. and Mrs. Stephen Pratt  
 Rena and Colm Prendergast  
 Mr. and Mrs. William A. Presley  
 Ms. Adelita Press  
 Mr. Daniel Press  
 Ms. Laura Santoski  
 Mr. Greg Price  
 Mr. and Mrs. Michael Puangco  
 Ms. Elinor Quill  
 Mr. Joe Quinn  
 Mr. Aboude Rabbat  
 Mr. and Mrs. Richard A. Radville  
 Mr. Marc Ramahi  
 Mr. Lance A. Ramshaw and  
 Ms. Abigail Wine  
 Dr. David Rand  
 Ms. Anugeeta Rao  
 Dr. and Mrs. Joseph Ratner  
 John and Sara Raveret  
 Michael and Lisa Ravicz  
 Mr. and Mrs. James A. Read, Jr.  
 Mr. Joseph T. Realmuto, Jr.  
 Mr. and Mrs. William S. Reardon  
 Ms. Claire B. Reardon  
 Howard and Deborah Reef  
 Mr. Louis J. Reeg  
 Ms. Peggy M. Reilly  
 Mr. and Mrs. Roger Reiser  
 Deborah and Andrew Rempis  
 Dr. Elizabeth J. Renaud  
 Mrs. Samuel Renbarger  
 Mr. George Revoir  
 Mr. Mimir L. Reynisson and  
 Ms. Shari L. Agatstein  
 Mr. Hugh Reynolds  
 Mr. and Mrs. William P. Rice  
 Mr. Daniel Richards and  
 Ms. Gail Spector

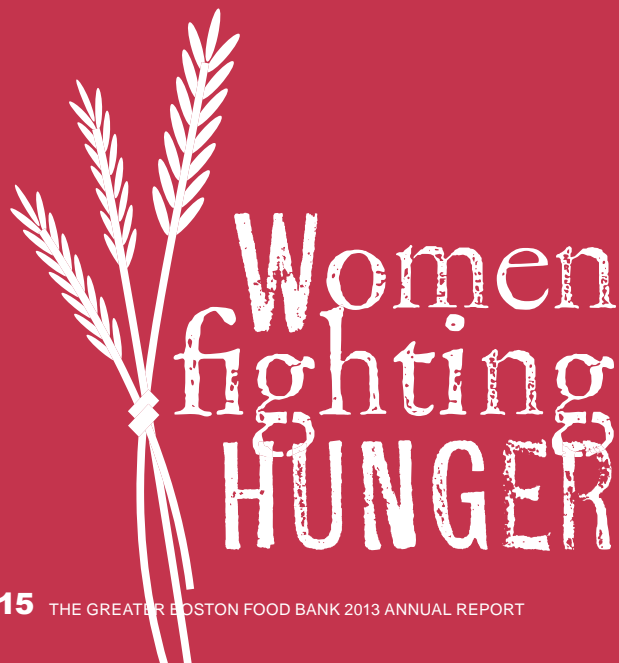
Ms. Yesim C. Richardson  
 Mr. Colin Riedel  
 Mr. and Mrs. James R. Rielly  
 Mr. Christopher Riordan  
 Mr. and Mrs. Michael Riordan  
 Mr. and Mrs. Steven B. Risch  
 Mr. and Mrs. Kevin Roane  
 Mr. and Mrs. Ralph M. Roberto  
 Mr. and Mrs. F. David Roberts  
 Mathew and Andrea Roberts  
 Edward and Denise Roche  
 Ms. Suzanne Rodday  
 Mr. Daniel Rodrigues  
 Mr. John Roepke  
 Mr. John H. Rogers and  
 Dr. Geraldine C. Garcia-Rogers  
 Mr. John Rogers  
 Mr. Henry A. Roman  
 Mr. and Mrs. Jamie A. Rome  
 Mr. Jonathan Roosevelt\* and  
 Ms. Elaine Gifford  
 Mr. Andrew B. Rose  
 Mr. Steven Rosen and  
 Ms. Susan Gochenour  
 Ms. Sarah Rothermel  
 Ms. Kathleen Rowe  
 Ken and Pat Rowell  
 Mr. Joffrey Roy  
 Ms. Celeste Royce and  
 Mr. Stephen Parker  
 Mr. Jeremy Rudel  
 Mr. Richard Rudman and  
 Ms. Karen Greenberg  
 Junek Ruether  
 Ms. Leah W. Rugen  
 Ms. Gwen Ruta  
 Pooja and Michael Rutberg  
 Ms. Theresa M. Sabean  
 Mr. Adam Sachs  
 Gilad and Ariela Sade  
 Mr. George Saideh  
 Ms. Maria Saiz and Ms. Athelia Tilson  
 Mrs. Michelle Salas  
 Karen and Gregory Salvucci  
 Mrs. Sylvia B. Sanchez  
 Mr. David Sandberg and  
 Ms. Dina Mardell  
 Ms. Laura Santoski  
 Mr. Jerry Sargent  
 Amy and Lewis Sassoon  
 Ms. Julie Satti Consentino  
 Dr. Jeffrey O. Saunders  
 Mrs. Lauren N. Savage  
 Mr. Peter J. Scheidler, Jr.  
 Mr. Robert W. Scheifler  
 Mr. Robert Scherzer and  
 Ms. Judith Monosson  
 Peter and Cindy Schliemann  
 Ms. Teresa M. Schreitmueller  
 Mr. Norbert S. Schulz  
 John and Lynda Schwartz  
 David and Florence Schwartz  
 Mr. and Mrs. Andrew Schwarz  
 Mr. and Mrs. Peter Schwarzenbach  
 Mr. Matt Sciandra  
 Mr. Matthew Segal  
 Ms. Karen Seif and Ms. Christine Sanni  
 Mr. Joseph Selby  
 Miss Sandra L. Serkess  
 Mr. and Mrs. Jeremiah Shafir  
 Ms. Mona Shah  
 Mr. Niraj Shah  
 Mr. David Shambroom and  
 Ms. Rose Giacomia  
 Elisa and Brad Lee Shannon  
 Ms. Lisa Sharp Borger  
 Henry and Kathryn Shaw  
 Ms. Esther Shay  
 Mr. Robert P. Shay  
 William and Mary Sherpick

Women Fighting Hunger is a compassionate group of women who partner with GBFB each year to respond to the challenge of hunger in our communities. They come together each September to raise awareness and funds to support GBFB in our mission to End Hunger Here.

In September 2013, more than 300 women gathered at The Mandarin Oriental for the annual breakfast to honor Chef Jody Adams (*photo-right*) in recognition of her work as a leading anti-hunger advocate and her incredible support of GBFB.

Attendees heard from Amanda Donovan (*photo-left*), a client of the Open Door Food Pantry (Gloucester, MA) who receives much of its food from GBFB. With the support of event sponsors and attendees the 2013 event raised enough funds to provide more than 300,000 meals to those in need in eastern Massachusetts!

We hope to continue to grow our Women Fighting Hunger initiatives in the coming years, bringing even more women together to End Hunger Here.





# Annual Contributors

## INDIVIDUAL

### \$1,000 - \$2,499 (cont.)

Ms. Kathryn E. Shine  
 Kelly and Mark Shriner  
 Mr. and Mrs. Samuel J. Shubrooks, Jr.  
 Ms. Mary J. Shultz  
 Ms. Phieng Siliphaivanh  
 Larry and Debbie Silverstein  
 Mr. William P. Sisler  
 Ms. Amy M. Slavik  
 Howard and Leslie Slavin  
 Jonathan and Karen Slote  
 Ms. Joan C. Smith  
 Ms. Julie Smith  
 Mr. Renny Smith  
 Mrs. Constance A. Smithwood  
 Ms. Edie Snow  
 Mr. Joe Sollecito  
 Mr. Mark Somerville  
 Dr. Benjamin D. Sommers  
 Mr. Michael Diener and  
 Ms. Barbara Soojian  
 Roland and Arlene Sorel  
 Mr. Michael Speicher  
 Mr. Frederick Sperounis  
 Anne and Laurence Sperry  
 Mr. Robert M. Sprague  
 David and Ann St. Germain  
 Mr. and Mrs. Vincent P. Stanton  
 Ms. Julie Staraitis and  
 Mr. Steve Bakke  
 Miss Jill Starett  
 Ms. Nancy R. Starr and  
 Mr. Philip C. Marshall  
 David and Elena Stasey  
 Mr. Charles Steenburg  
 Ms. Prudence L. Steiner  
 Mr. John C. Stelley  
 Ms. Anne M. Stemlar  
 Mr. and Mrs. John R. Stevens  
 Ms. Anne Stevens  
 Mr. and Mrs. Campbell Stewart  
 Mr. and Mrs. Glenn W. Stewart  
 Ms. Laura E. Stiglin  
 Mr. Simon Stillwell and  
 Ms. Heather Burke  
 Mr. Ashley G. Stone and  
 Mr. Dana L. Albert  
 Jim and Cathy Stone  
 Mr. and Mrs. Mark Stott  
 Dr. John H. Straus and  
 Ms. Liza Ketchum  
 Robert and Donna Suffredini  
 Jonathan and Jennifer Sukow  
 Mr. Mark Sullivan  
 Dan and Leslie Sullivan  
 Ms. Laura J. Sullivan  
 Ms. Margaret A. Sullivan  
 Miriam and David Sullivan  
 Mr. Robert M. Supnik  
 Ms. Elizabeth D. Sweet  
 Mr. C. David Swindell and  
 Ms. Gail F. Goodman  
 Mr. Brian F. Sykes  
 Mr. Jack W. Szostak and  
 Ms. Terri-Lynn McCormick  
 Mr. Tony T. Takazawa and  
 Ms. Catherine Dudley  
 Cheryl and Richard Talbot  
 Mary and Nakul Talcherkar  
 Ms. Barbara D. Tally  
 Ms. Joanne Tan  
 Ms. Leah Zallman and  
 Mr. Nadav Tanners  
 Mr. and Mrs. Arthur S. Tarlow, Jr.  
 Mr. John J. Tegan  
 Ms. Melita Teichert and  
 Mr. William K. Sabine  
 Mr. Vic Terawskyj

Ms. Elizabeth Terry  
 Mr. and Mrs. William J. Teuber  
 Ms. Ann Thacher Anderson  
 Ms. Bernadette T. Thie and  
 Mr. Ian R. Roke  
 Mr. Richard Thompson  
 Mr. Samuel Thompson  
 Ms. Jean M. Thrall  
 Dr. Catherine Thut  
 Ms. Amy C. Tierce  
 Mr. and Mrs. Michael K. Tivnan  
 Ms. Leigh N. Todd  
 Mr. Barton M. Tomlinson  
 Roy and Merideth Treible  
 Mr. Robert Trombley  
 Mrs. Phyllis Troupe Hawkins  
 Ms. Carol Tully  
 Ms. Barbara J. Tumelty  
 Mr. and Mrs. William B. Tye  
 Eric and Goldie Ungar  
 James and Margaret Utterback  
 Mr. Charles A. Van Meter  
 Ms. Anne Louise C. Van Nostrand  
 Dr. Maria Vasilakis  
 Brigid and Timothy Vaughan  
 Ms. Donna Venegas  
 Mr. Venkat Venkatraman and  
 Ms. Carolyn Lattin  
 Mr. and Mrs. Christopher Vincent  
 Mr. Joseph Virgilio  
 Lilian and Marcio Voloch  
 Ms. Antonia J. von Gottberg  
 Robert and Donna Vona  
 Ms. Martha M. Vreeland  
 Mrs. Sharon Wade-Fagan  
 Martha Wadleigh, M.D.  
 Mr. Gregory R. Wagner and  
 Ms. Emily A. Spieler  
 Joe and Nancy Waldstein  
 Mr. and Mrs. Walker J. Wallace  
 Mr. James Wallack and  
 Ms. Rebecca Matthews  
 Mr. Peter C. Walsh  
 Ms. Jill A. Ward  
 Mr. Teddie Wardi  
 Ms. Mary Ward-Thompson and  
 Mr. Christopher Probyn  
 Ms. M. Elizabeth Ware  
 Ms. Anne Watson-Born  
 Mrs. Patricia M. Watts  
 Ms. Frances T. Webb  
 Dr. Barbara Weber  
 Ms. Barbara V. Weidlich  
 In Memory of Albert and  
 Pauline Weiner  
 Ms. Ruth E. Weinrib  
 Dr. Mark Schechter and  
 Dr. Risa Weinrit  
 Dr. Wendy Weiss and  
 Mr. Stephen E. Shay  
 Mr. Christopher S. Welles  
 Philip and Helen Wendler  
 Mr. Richard Wenning  
 Mr. Albert West  
 Gary and Elaine Westermarck  
 Mr. and Mrs. Stephen Whelan  
 Mr. Kent W. Whitaker and  
 Ms. Sarah L. Blake  
 Mr. Carl P. White  
 Anne and Alexander White  
 Ms. Susan Whitehead  
 Ms. Kim Williams and Mr. Trevor Miller  
 Mr. and Mrs. L. Ware Williams  
 Mr. Todd Williamson  
 Mr. Sam Wiseman  
 Ms. Katherine A. Wolf  
 Ms. Mary Wolfson  
 Mr. and Mrs. Chauncey Wood  
 Mr. and Mrs. Charles E. Woodward

Mr. Jonathan C. Wulp  
 Rosemary and Daniel Wywoda  
 JoAnne Yates and Craig N. Murphy  
 Mr. and Mrs. William Yee  
 Mr. and Mrs. Stephen Yost  
 Mr. Stephen Young  
 Mr. Philip Yuska  
 Mr. Michael F. Zito  
 Mr. Andrew A. Zucker  
 Mr. and Mrs. Daniel Zwelling

## INSTITUTIONAL

### PRESIDENT'S CIRCLE

#### \$250,000 or more

Citizens Bank  
 The Doe Family Foundation  
*Our Family Foundation by*  
 Stop & Shop/New England Division  
 The Stop & Shop Supermarket  
 Company

### LEADERSHIP CIRCLE

#### \$100,000 - \$249,999

Anonymous (2)  
 Bank of America Charitable Foundation  
 BNY Mellon  
 Feeding America  
 Highland Street Foundation  
 Jacobson Family Foundation  
 Liberty Mutual Foundation  
 Target  
 The Richard and Natalie Jacoff  
 Foundation  
 The Stop & Shop Supermarket  
 Company  
 Yawkey Foundation II

#### \$50,000 - \$99,999

Anonymous  
 Cummings Foundation  
 Leaves of Grass Fund  
 Lewis Family Fund  
 MetLife Foundation  
 New England Development  
 Roche Bros. Supermarkets, Inc.  
 Shaw's Supermarkets  
 State Street Foundation  
 The KBK Foundation  
 The Salah Foundation  
 WAAF 97.7/107.3 FM  
 Wakefern Food Corporation  
 Walmart Foundation

#### \$25,000 - \$49,999

Ameriprise Financial  
 Commonwealth of Mass. Employees  
 Campaign  
 Dunkin' Brands  
 Eos Foundation  
 FedEx Services  
 Genzyme Corporation  
 Give With Liberty  
 Google Matching Gift Program  
 Hershey Family Foundation  
 J.E. & Z.B. Butler Foundation  
 Linde Family Foundation  
 New Balance Foundation  
 Newman's Own Foundation, Inc.  
 Procter & Gamble  
 Panera, LLC  
 Perpetual Trust For Charitable Giving,  
 Bank of America, N.A., Trustee  
 Taste of the NFL  
 TD Charitable Foundation  
 The Klarman Family Foundation  
 The P&G Fund of The Greater  
 Cincinnati Foundation



# THANK YOU.

Our President's and Leadership Circles are GBFB's closest donors who have committed to work alongside us in our mission to End Hunger Here, and have made extraordinary annual contributions in the areas of: financial and in-kind support, food donations, and volunteer hours.

Without the support of our President's and Leadership Circle donors, The Greater Boston Food Bank would not be able to serve the 545,000 people in need across eastern Massachusetts. Through their generous support of time, money, and food, our President's and Leadership Circle donors volunteered more than 3,000 hours of their time and helped us provide over 15 million meals to those in need in fiscal year 2013. We thank you for your leadership and generosity. Your dedication and support has helped us get closer to providing ONE MEAL A DAY to our neighbors in need across eastern Massachusetts.



## INSTITUTIONAL

### \$10,000 - \$24,999

Anonymous  
Accenture  
Alice Willard Dorr Foundation  
American Express  
Ameriprise Financial Gift Matching Program  
Beaverdale Foundation  
Berkman Charitable Trust  
Bilezikian Family Foundation  
Bimbo Bakeries USA, Inc.  
Binnacle Family Foundation  
Biogen Idec Foundation  
BJ's Charitable Foundation  
BJ's Wholesale Club, Inc.  
Blue Cross Blue Shield of Massachusetts  
Cambridge Community Foundation  
Caroline Blanton Thayer Charitable Trust  
Charles H. Farnsworth Trust, Bank of America, N.A., Trustee  
Charles Sanders Trust  
Cheesecake Factory  
Cisco Systems Foundation Matching Gift Program  
Cogan Family Foundation  
Consigli Construction Co., Inc.  
Cornerstone Research, Inc.  
Covidien  
David and Katherine Moore Family Foundation  
Deloitte  
Eastern Bank Charitable Foundation  
General Mills Foundation  
IBM Employees Payroll Services  
J.R. Albert Foundation  
John C. and Eunice B. Morrison Charitable Foundation  
Johnson O'Hare Company  
JP Morgan Private Bank  
Kraft Foods, Inc.  
Lawrence J. and Anne Rubenstein Charitable Foundation  
Lovett-Woodsum Foundation  
Margret Pahl Stewart Foundation  
MAZON: A Jewish Response to Hunger  
Mintz, Levin, Cohn, Ferris, Glovsky and Popeo, P.C.  
Morgan Stanley Foundation  
New England Patriots Charitable Foundation  
New World Pasta Company  
Nordstrom, Inc.  
Ocean Spray Cranberries  
Olivia's Organics  
Project Bread  
Red Sox Foundation  
Richard Saltonstall Charitable Foundation  
RSA Media, Inc.  
Safety Insurance Charitable Foundation  
State Street Corporation  
Stoughton Steel Company, Inc.  
Suffolk Construction Company, Inc.  
Sun Life Financial  
T.G.I. Fridays  
The Boston Foundation  
The Krupp Foundation  
The Pampered Chef  
TJX Foundation  
Tosa Foundation  
TripAdvisor, LLC  
Tufts Health Plan Foundation, Inc.  
Verizon Wireless  
Vistaprint

Webster Bank  
Whole Foods Market, Inc.  
NE Regional Office

### \$5,000 - \$9,999

Anonymous  
Adnexus Therapeutics  
Allstate Insurance Company  
Arbella Insurance Group  
Atlantic Philanthropies Director/Employee Designated Gift Fund  
Atlantic Vision  
Beanpot Broadcasting Corp.  
Bert and Betty Greene Memorial Fund  
Bloomberg L.P.  
Boston Bruins Foundation  
C & S Foundation  
Chitika, Inc.  
Circor, Inc.  
Clarke Corporation  
Combined Federal Campaign  
ConAgra Foods  
Craigie Bistrot, LLC  
Creative Community Connections, LLC  
Credit Suisse Americas Foundation  
Eastern Bank  
Edward Bangs Kelley and Elza Kelley Foundation, Inc.  
Edwards Wildman Palmer, LLP  
Electronic Fasteners, Inc.  
FCSI New England Chapter  
Feed The Need, Inc.  
GE Foundation  
Grantham, Mayo, Van Otterloo & Company  
Hamersley's, Inc.  
iParty Retail Stores  
Jack Forte Foundation  
Joan Bentinck-Smith Charitable Foundation  
John Hancock Matching Gifts Program  
Mary B. Dunn Charitable Trust  
Massachusetts Project 351  
Millennium Matching Gifts  
MillerCoors  
Morton and Dinah Danseyar Family Foundation  
Nathaniel and Elizabeth P. Stevens Foundation  
OneBeacon Charitable Trust  
PricewaterhouseCoopers, LLP  
Prokopis Charitable Foundation  
Rasky Baerlein Strategic Communications  
Reebok Foundation  
Rialto  
Run 10 Feed 10 Race Series  
Save-A-Lot  
Share Our Strength  
Shippy Foundation  
State Street Matching Gift Program  
The Barrington Foundation, Inc.  
The Cross Country Group  
The Helen G. Hauben Foundation  
The Lassar and Fanny Agoos Charity Fund  
Thomas Anthony Pappas Charitable Foundation  
United Way of Massachusetts Bay and Merrimack Valley  
Wells Fargo Capital Finance

### \$1,000 - \$4,999

Anonymous (3)  
105.7 WROR  
7-Eleven, Inc.  
80 Thoreau

ableBanking  
Adobe Foundation  
Adobe Systems Incorporated Matching Gifts Program  
AIG Matching Grants Program  
Alliance Health of Quincy, Inc.  
Altria Client Services  
AMD Matching Gifts Program  
American Bar Association Forum on the Construction Industry  
American Pennies For Hunger, Inc.  
American Refrigeration Company, Inc.  
Amgen Foundation  
Amica Companies Foundation  
Annaly Capital Management, Inc.  
Aon Foundation  
Arthur Ashley Williams Foundation  
ArtsBoston  
Bank of America Matching Gifts  
Bar Association of Norfolk County  
Bay State Federal Savings Charitable Foundation  
Baycoast Bank  
Beacon Hill Circle for Charity  
Bear Charitable Foundation  
Beth Israel Deaconess Department of Surgery Foundation  
Beth Israel Deaconess Medical Center  
BlackRock Matching Gift Program  
Block Club Cards, Inc.  
Blue Ginger  
Boston Food Cooperative, Inc.  
Boston Magazine  
Boston Medical Center  
Boston University  
Bostonian Skilled Nursing and Rehabilitation Center  
Breckinridge Capital Advisors, Inc.  
Bristol-Myers Squibb Foundation  
Bromley Charitable Trust  
Brown Paper Tickets, LLC  
Build A Bear  
Bunker Hill Community College  
C.R. Peterson Associates  
Cadence Capital Management, LLC  
Canby Financial Advisors, LLC  
Castanea Partners, Inc.  
CFE International  
Cherbec Advancement Foundation  
Chubb & Son  
Chubb Group of Massachusetts  
Churchill Downs  
CLINK  
Clovally Charitable Trust  
Commonwealth of Massachusetts, Office of Attorney General  
Cone Communications, LLC  
Conopco, Inc.  
Cooley, LLP  
Covidien Employee Matching Gift Program  
Darden Restaurants  
DataXu  
Dave Swain Associates, Inc.  
Dell Computer Corporation  
Digital Federal Credit Union  
Dimeo  
Drink Craft Beer, LLC  
DTech Labs  
E. Alepedis, Inc.  
E. Joseph Evans Charitable Trust  
Eaton Vance Investment Management  
ECG Management Consultants  
Echostar Technologies, Inc.  
Emulex  
Erie Community Foundation  
Executel Communications, Inc.

Fannie Mae SERVE Matching Gift Program  
Federal Home Loan Bank of Boston  
Fidelity Investments  
Fiduciary Trust Charitable Foundation  
Financial Systems Consultants, Inc.  
Fish & Richardson P.C.  
Flavor Media  
foodweeks, LLC  
Forward Advantage Foundation, Inc.  
Foundation M  
Frozen and Refrigerated Association of the Northeast  
Goldman Sachs  
Goldstar Events, Inc.  
Grand Circle Foundation  
Grandin Family Foundation  
Grill 23 & Bar  
Gunst Charitable Foundation  
GymIt  
Hallam Associates, Inc.  
Hannaford Supermarkets  
Harvard Pilgrim Health Care Foundation  
Harvard University  
Harvest 2000 LLC  
Hatch-Jennings, Inc.  
High Rock School  
Highroads, Inc.  
Home Market Foods  
Homestead Foundation  
Houghton Mifflin Company  
Howland Family Foundation  
HP Hood, LLC  
Income Research and Management  
ING Charitable Giving Program  
Integrity Energy Service, Inc.  
ITW Food Equipment Group  
J Read Corporation  
Jack and Jill of America, Inc. Eastern Region  
Janji  
Jenzabar, Inc.  
Jewish Communal Fund  
JMP Securities, LLC  
Jockers Family Foundation  
John Noggle Company  
Julius E. Baskys  
Kars 4 Kids  
King's Chapel  
La Morra  
Loomis Sayles & Company, L.P.  
Looney & Grossman LLP  
Lululemon USA, Inc.  
Macy's Foundation  
Macy's New England Central Office  
Marriott International, Inc. Serve Our Communities Fund  
Martignetti Companies  
Massachusetts Department of Transportation  
McDermott, Will & Emery  
McGladrey, LLP  
MediaCom USA  
Merck Partnership for Giving  
Merz Family Foundation  
MetLife  
Microsoft Matching Gift Program  
Millennium Bostonian Hotel  
Miller Zell North America  
MIT Sidney Pacific Graduate Residence  
Morris M. Rand Memorial Foundation  
Music for Food  
National Refrigeration & Air Conditioning Products  
NSA Bahrain-Holy Trinity Chapel  
O'Connor Charitable Trust  
Octagon Property Management Corporation

### \$1,000 - \$4,999 (cont.)

P&G Gillette  
Partners Community Healthcare, Inc.  
Peapod, Inc.  
Pearson / Prentice Hall  
PerkinElmer  
Pest Services  
Pfizer Foundation Matching Gift Program  
PGA Tour Wives Association, Inc.  
Planet Aid, Inc.  
Power Advocate, Inc.  
Prince Charitable Trusts  
Progressive Asset Management Group  
Quantitative Economic Solutions, LLC  
Quincy Mutual Fire Insurance Company  
Rastelli Foods Group  
Renaissance Charitable Foundation  
Renew Energy Advisors, LTD  
Ritz Associates  
Robins, Kaplan, Miller & Ciresi LLP  
Charitable Foundation  
Rosenbaum/Steinberg Family Foundation  
Rothstein Foundation  
Saint Vincent Depaul Society  
Samuel & Bernice Shapiro Charitable Trust  
Senior Whole Health, LLC  
Shawmut Design & Construction  
South Shore Race Management, LLC  
St. Clare Parish  
Stella  
Sudbury United Methodist Church  
Synagro Technologies, Inc.  
Taylor, Duane, Barton & Gilman, LLP  
Temple Isaiah  
Teradyne, Inc.  
The Birch Point Fund  
The Boston Consulting Group, Inc.  
The Draydor Foundation  
The E. Lafayette and Etienne A. Quirin Foundation, Inc.  
The George and Marie Chabot Charitable Foundation  
The Hartford  
The James & Veronica Chesterton Family Foundation  
The John P. Laucus Foundation  
The Kramer Family Foundation  
The Muriel and Norman B. Leventhal Family Foundation  
The Nord Family Foundation  
The Pedmil Fund  
The Penobscot Fund  
The Robert Treat Paine Association  
The Starbucks Foundation  
The Travel Collaborative  
Theory One Design  
Thornton & Naumes, LLP  
Tiger Woods Foundation, Inc.  
Todd & Weld LLP  
Tom Curren Companies  
Tomasso Trattoria, Inc.  
United Way of New York City  
Unity Games  
Vacuum Barrier Corporation  
Vanguard Charitable Endowment  
Veeva Systems, Inc.  
Verizon Foundation  
Vermont Mutual Insurance Group  
Von Mertens Family Charitable Lead Trust  
Wapack Foundation  
Weatherspoon Charitable Foundation

Wellpoint Foundation  
West Concord Union Church  
Wilmer Hale  
Wilson Butler Architects  
Winter Wyman Company  
Yale Charitable Foundation  
Yard House Boston  
Zoom Information  
Zurich American Insurance Company

## IN-KIND

Anonymous (3)  
AOL  
BJ's Wholesale Club, Inc.  
Blue Cross Blue Shield of Rhode Island  
Blue Ginger  
Boston Bruins Foundation  
Boston Celtics Shamrock Foundation  
Boston Magazine  
Boston Red Sox  
Mr. and Mrs. Woody E. Bradford, Jr.  
Burke Distributing Corporation  
Camden Consulting Group  
Cerio Communications  
CK Strategies  
Computer Associates  
Corbu Spa & Salon  
dbar  
Diageo  
Demoulas Market Basket  
Designers Choice LLC  
Edwards Wildman Palmer LLP  
FactSet Research Systems, Inc.  
Four Seasons Hotel Boston  
Foxwoods Resort and Casino  
Garelick Farms  
Sarah Gilfillan  
Goodwin Procter LLP  
John and Gail Graham  
Grant Thornton  
Harpoon Brewery  
Karen Holmes Ward  
Island Creek Oysters  
Ralph James  
Jasper White's Summer Shack  
Keurig, Inc.  
Lala Rokh  
Latitude Beverage Co./90+Cellars  
Legal Sea Foods  
L.E.K. Consulting  
Lenox Hotel  
Maine Distilleries, LLC  
Max Ultimate Food  
Mintz Levin  
Pat Morgan  
Network Health  
New England Patriots Charitable Foundation  
North Star  
Pete and Gerry's Organic Eggs, LLC  
Peterson Party Center, Inc.  
Picco Restaurant  
Powell & Mahoney  
Rasky Baerlein Strategic Communications  
Red Sox Foundation  
Rialto  
RSA Media, Inc.  
Seyfarth Shaw LLP  
Spaces Design Studios  
Steven Spiegel  
Sullivan & Worcester  
The Catered Affair  
The Stop & Shop Supermarket Company  
Tiffany White Photography

Toyota  
Travis Consulting  
Tremont 647  
James P. Tyrell  
Utz Quality Foods, Inc.  
WAAF 107.3 FM / 97.7FM  
WCVB-TV5  
Matthew West

## FOOD AND GROCERY LEADERSHIP CIRCLE (\*\*)

BJ's Wholesale Club, Inc.  
Garelick Farms LLC  
Gold Medal Bakery, Inc.  
Joseph's Gourmet Pasta Company  
Olivia's Organics & State Garden  
Shaw's & Star Market, Inc.  
The Stop & Shop Supermarkets Company  
Tribe Mediterranean Foods  
Walmart  
Yoplait Colombo Company

## FOOD AND GROCERY

4C Foods Corp.  
4M Fruit Distributors  
7-Eleven, Inc.  
A Catered Affair/Boston Marathon  
Acosta Sales & Marketing  
Ahold USA  
Alfredo Aiello Italian Foods, Inc.  
Allman Fruit Farm  
ALS Therapy Development Institute  
Amazon Trading Company (CLC Custom Pack)  
American Fruit  
American Pride Seafoods  
Americold - Taunton  
Andrew's Trucking  
Apollo Food Group  
Arctic Fisheries  
Ark Transportation  
Armour-Eckrich  
Arthur G. Silk Company  
B + R Produce Co.  
Back Bay Hotel  
Backyard Farms  
Bake'n Joy Foods, Inc.  
Baldor of Boston  
Bar S Foods  
Barilla America, Inc.  
Barr and Son Transportation  
Bear Hill Golf Club  
Garber Bros., Inc.  
Big Y Foods, Inc.  
Bimbo Bakeries USA, Inc.  
Bioceutica LLC  
Blount Fine Foods  
Body Armor  
Bon Appetit  
Borders Books and Music - Galleria  
Boston Area Gleaners  
Boston Baking Inc.  
Boston Conservatory  
Boston Salad Company  
Boston Tomato & Packaging, LLC  
Bostonia Produce, Inc.  
Boxford Bake House  
Bozzuto's, Inc.  
Brady Enterprises, Inc.  
Building Restoration Services  
C & S Wholesale Grocers  
C.H. Robinson  
Cains Foods, L.P.  
California Association of Food Banks  
California Giant Berry Farms  
California Pizza Kitchen  
Cal-Organic Farms  
Campbell's, Inc.

Captain Marden's Seafood  
Carando Gourmet  
Cargill  
Cavalia, Inc.  
CFE International  
Chapmill Sweet Potato Cracker Company  
Chelsea Milling  
Chiquita Brand International, Inc.  
Colleges of the Fenway (Great Race)  
Columbia Fresh Produce Sales  
Community-Suffolk, Inc.  
Con Agra  
Concord Foods  
Cone Communications  
Conventures  
Cookiehead Snacks  
Costa Fruit & Produce Company  
Costas Provisions Corp.  
Costco - Waltham  
Culver Duck Company  
Custom Blends, Inc.  
CVS Corporation  
Dancing Deer Company  
D'Arrigo Brothers  
Davidson Company, Inc.  
Decas Cranberry Products  
Del Monte Fresh Produce N.A., Inc.  
Demakes Enterprises, Inc.  
Derby Logistics  
DiSilva Fruit  
Dole Packaged Foods  
Dowse Orchards  
Duda Farm Fresh Foods  
Dunkin' Brands  
Echo Logistics  
Edelweiss Patisserie  
Effic's Homemade, LLC  
Epic Enterprises  
Equal Exchange  
Espresso Express  
Fallon Community Health Care  
Feed The Children  
Finagle a Bagel  
First Fruits  
Forlizzi & Bimber, Inc.  
Foster Hill Transport  
Foxboro Terminals  
Freihoffer  
Fresno Community Food Bank  
Frito Lay  
Fruitguys - Donate-A-Crate Program  
Fuji Food Products, Inc.  
Garber Bros., Inc.  
General Mills, Inc.  
Genoa Sausage Company  
Gentle Giant  
Girl Scouts of Eastern MA  
Glenn Candelario  
GMR Marketing  
Gold Bell  
Gorton's Inc.  
Greencore USA  
H.P. Hood, LLC  
H.T. Berry Company  
Hannaford Supermarkets, Inc.  
Hans Kissle Company  
Hapco Farms Inc.  
Harvard Biolab Building Operations  
Healds Valley Farms, Ltd.  
Help A Friend  
Hendrick's Produce  
High Liner Foods  
Hoffman Transportation, Inc.  
Home Market Foods  
HoneyBaked Ham Co.  
HoneyBaked Hams Co. of Georgia  
Hormel Foods Corp.



## FOOD AND GROCERY (cont.)

Hostess  
International Seafood Show  
Irving Farms, Inc.  
Island Harvest Food Bank  
Jacobs Farm  
Jacqueline's Wholesale Bakery, Inc.  
Jar Trucking  
Jennie-O Turkey Store  
Jenny Craig, Inc.  
John Cerasuolo Company  
John Morrell and Company  
John Nagle Company  
Kayem Foods, Inc.  
Kellogg's Company  
Kendall Confectioners  
Ken's Foods, Inc.  
Kettle Cuisine  
Kings Bowling  
King's Hawaiian  
Kraft Foods, Inc.  
Kyler Seafood, Inc.  
L&M Bakery  
La Patisserie  
Lakeside Foods  
Land O' Lakes, Inc.  
Late July Organic Snacks  
Leavitt Corporation  
Levy Restaurants - BCEC  
Lifetime Brands  
Lindt Chocolate  
Long & Scott Farms  
Lundberg Family Farms  
M & J Produce, Inc.  
M. F. Foley Company, Inc.  
MA Dept. of Elementary & Secondary Ed.  
Maine Distilleries, LLC  
Make Meaning  
Mama Rosie's  
Market Basket  
Martin International Corporation  
Martin Transport  
Massachusetts Food Association  
Massimo Zanetti  
Matarazzo Brothers, Inc.  
Matt Harrison/Blue Bunny  
McLane  
Milton High School  
Moark, LLC  
Mondelēz International Inc.  
MooBella, Inc.  
Mr. Joe Marcus  
Muffin Town  
Mutual Produce Co.  
My Grandma's Coffee Cake of New England  
Naked Pizza - Brookline  
National Watermelon Promotion Board  
Nestle USA, Inc.  
Nestle Waters North America, Inc.  
New England Banana  
New England Coffee Co.  
New England Ice Cream  
New England Market  
New England Produce Council  
Nichols Trucking  
Northeast Refrigerated Distributing Co.  
NY Deli Patrol  
Ocean Beauty  
Ocean Spray  
Odwalla, Inc.  
Old Orchard Brands  
Otis Spunkmeyer  
P & K Services LLC  
P. Tavilla Company, Inc.

Pacific Sunrise International Corp.  
Pan Mass Challenge  
PanaPesca USA Corp  
Panera Bread Co., LLC  
Paramount Citrus Packing  
PepsiCo  
Perdue Farms  
Perkins  
Peter Condakes Company  
Philabundance  
Pier Fish Company  
Pinnacle Foods  
Plainville Farms  
PNA Transport  
Pray Trucking  
Primarque Products Company, Inc.  
Prime Trucking  
Procter & Gamble, Inc.  
Produce Connection  
Protenergy Natural Foods  
Quaker  
Ranfac Corporation  
Redi Fresh Produce, Inc.  
Reichle Farms  
Reinhart Foodservice LLC  
Richie's Slush  
Rich's Transportation  
RoadOne Logistics  
Roche Brothers  
Rohstein Corporation  
Royal Food Import Corporation  
S&H Express  
S. Strock & Co., Inc.  
Salov North America  
Sara Lee Foods, USA  
Save-A-Lot  
Schwans  
Scooper Bowl - The Jimmy Fund  
ScotLynn Commodities, Inc.  
Seaboard Foods, Inc.  
Seacrest Foods International  
Seafood Doctor  
Seashare  
Season Harvest Foods  
See's Candy  
Semplicemente Italiano LLC  
Serino's Foods  
Shapiro Produce  
Silverbrook Farm  
Sinco Incorporated  
Skeeter Snacks  
Sky Chef's Inc.  
Smithfield Packing Company, Inc.  
Snyder's - Lance, Inc.  
Sodexo  
Somerset Club  
Stacy's Pita Chip Company  
Starbucks Coffee Company  
Sun Chase Foods, Inc.  
Sun Maid Growers of California  
Sun Products  
Sunny Delights Beverage Company  
SuperValu, Inc.  
Szawlowski Potato Farms, Inc.  
T. Marzetti Company  
T.F. Kinnealey  
Target Brands, Inc.  
Taylor Farms  
Texas Food Bank Network  
The Clorox Company  
The Coca-Cola Company  
The Hain Celestial Group  
The Hillshire Brands Company  
The Hype Agency  
Thomas Produce Co. Inc.  
Tighe Logistics  
Torrey Farms  
Trader Joe's

Trans-Ocean Products, Inc.  
Travers Fruit  
Tri-Mark United East  
Trinity Transport  
Tropicana Products, Inc.  
Truitt Brothers  
Tyson Foods  
Unilever USA  
United Stationers Supply Co.  
United Way of New Bedford  
Unreal Candy  
US Cold Storage  
US Cold Storage  
USDA, Food and Nutrition Service  
UTZ Quality Foods  
Pray Trucking  
Vitasoy USA, Inc.  
Voelpel Farms, Inc.  
Wayne Bailey Produce  
Welch's  
Wells Dairy Inc. - Blue Bunny  
Western Harvest  
White Wave Foods  
Whitlock Packaging  
Whole Foods Market, Inc.  
Whole Grains Council  
Whole Harvest  
Wild Blue Yonder Foods  
Williams Farms Produce Sales  
Wilson Farms, Inc.  
Wunder Smoothie  
Yell-O-Glow Corporation  
YMB Enterprises LLC  
ZICO Beverages  
Zone Labs, Inc.

## FOOD DRIVE

33 Arch Street  
Aberdeen Group  
Advantage Waypoint, LLC  
Ahold USA  
Alliance Health of Quincy, Inc.  
Altran  
Alzheimer's Association  
American Repertory Theater  
American Student Dental Association at BU  
American Tower  
Ameriprise - Gage & Wilson  
AOL Advertising  
Aramark at Berklee College  
Art of Care  
Assembleia de Deus Ministerio  
Athletic Evolution  
Atlantic Trust  
Atrius Health  
AvalonBay Communities  
Back Bay Hotel  
BAE Systems  
Baron Baptiste Yoga Studios  
Bay State Financial  
BDO Seidman LLP  
Berklee College of Music  
Bingham McCutchen LLP  
BJ's  
Blue Cross Blue Shield  
BNY Mellon  
Bostin VA Healthcare - Boston  
Boston 84  
Boston Arts Academy  
Boston Babies  
Boston Collegiate Charter School  
Boston Community Leadership Academy  
Boston Conservatory  
Boston Scientific  
Boston University (Multiple Groups)  
Boston VA Healthcare - West Roxbury

Bostonian Skilled Nursing and Rehabilitation Center  
Boundless Learning, Inc.  
Bowditch & Dewey LLP  
Boy Scout Troop 322  
Brandeis University  
Brickyard VFX  
Brimmer and May Elementary School  
Bristol County District Attorney  
British School of Boston  
Brown Brothers Harriman & Co.  
BU Dental Health Center  
BU Phi Kappa Theta  
Venus Wafers  
Cambridge College  
Capital Crossing Servicing Inc  
CB Richard Ellis Burlington  
CB Richard Ellis/New England  
Center for Health Information Analysis  
Central Reform Temple of Boston, Inc.  
CenturyLink  
Cerulean Pharma, Inc.  
Charity Partners  
Cheesecake Factory  
Chi Eta Zeta Chapter - Zeta Phi Beta Sorority  
Choate, Hall & Stewart  
Circle Company Associates  
Citizens Bank of Massachusetts  
Clarendon Group USA  
ClearView Healthcare Partners  
Coast Guard  
Commonwealth Care Alliance  
Commonwealth Financial Network  
Commonwealth of Massachusetts, Office of the Attorney General  
Community Therapeutic Day School  
Compass Medical  
Compliance Week  
Cone Communications  
Constant Contact  
Constellation Pharmaceuticals  
Cooley, LLP  
Corning Incorporated  
Crescent Ridge Dairy  
CSM Bakery Products  
Curry College  
Customs and Border Protection  
d50 media  
Davita Northeast Cambridge  
Debt Exchange  
Deliverance Revival Tabernacle Inc.  
Department of Developmental Services  
Department of Homeland Security/ICE/HSI  
Department on Health and Human Services  
Deutsch Williams Brooks DeRensis & Holland, P.C.  
Donovan Hatem, LLP  
Eagle Investment Systems  
Eaton & Eustis Co.  
EDC  
EF Education  
Element Productions  
EMC  
Emerson College  
EPA  
FAS, General Services Administration  
FDIC  
FEMA  
Fenway Studios  
Fessenden School  
Fidelity Investments  
First Church Boston

First Marblehead  
Fish & Richardson P.C.  
Fisher College  
Foley Hoag LLP  
Food and FUNdraiser - Helping Friends Eat  
Frontier Science/Eastern Coop  
Gage & Wilson  
Gazelle  
General Electric Company  
Google  
Grant Thornton  
Greater Media/Qdoba  
Hallkeen Management  
Hanscom Air Force Base  
Harbor Towers Luxury Apartments  
Harley Davidson of Boston  
Harvard Business School  
Harvard Clinical Research Institute  
Health Law Advocates, Inc.  
High Rock School  
Highlands At Dearborn  
Hitachi Consulting  
Holland & Knight  
Home Properties  
Homebrew Emporium, Inc.  
Humana  
ImmunoGen, Inc.  
ING  
Ing Financial Partners  
Insight Global  
Intelligent MDx  
Invensys Operations Management  
Ironwood Pharmaceuticals  
ISKCON Boston  
Iskcon New England  
JetBlue  
John Hancock  
John Hancock Financial Services, Inc.  
John Hancock Mutual Funds  
John Silber Early Learning Center  
Johnson String Instruments  
Jones Day  
Joyce Kilmer School  
Junior Achievement of Northern New England  
JUNTOS/CRLS High School  
Kaplan English School  
Kaplan International  
Keches Law Group, PC  
Kforce  
Klein Hornig, LLP  
Korean Students Association at Boston College  
Kulturez Skate Shop  
Landmark Center  
Lasell College  
Lesley University  
Lexington High School  
Liberty Mutual Foundation  
Lilly USA  
LL Bean  
Looney & Grossman LLP  
Marriott  
Marshalls  
Massachusetts College of Art and Design  
Massachusetts Teachers Association  
Massport Authority  
MBA Connections Club at Northeastern University  
McDermott, Will & Emery  
McGladrey, LLP  
MCPHS - Physician Assistant Student Society (Boston)  
MetLife  
Mildred Avenue K-8

Millennium Pharmaceuticals, Inc.  
MIT Press  
MIT Sidney Pacific Graduate Residence  
Mobeex  
Monitor Group  
Mozart Elementary School  
Murphy & King  
Murphy Hesse Toomey & Lehane LLP  
National Grid  
National PanHellenic Council  
Needham High School Leadership Team  
Neighborhood House Charter School  
New England Clemson Club  
New England College of Optometry  
New England Law Boston  
New England Quality Care Alliance  
Norfolk County District Attorney's Office  
North Street Grille  
Northeastern University (Multiple Groups)  
Ocean Spray Cranberries  
Octagon Property Management Corporation  
Or Food Express  
Partners HealthCare  
Pass the Plate: A Fight to Feed Peloton  
Pepsi Wilmingon  
Perkin Elmer Life Sciences  
Posternak Blankstein & Lund LLP  
Power Advocate, Inc.  
Prince Lobel Tye, LLP  
Property Management of Andover  
RBS Citizens  
RCN - Arlington  
Red Sox Foundation  
Resurrection Youth Ministry  
Robins, Kaplan, Miller & Ciresi LLP  
Roxbury Prep Charter School  
Rubin and Rudman LLP  
S+H Express  
Safelite Auto Glass  
SAIL Magazine  
Samuels Associates  
Scott Brown for United States Senate  
SEC  
Sharon Preschool  
Shaws Spirit of Giving - Can Drive  
Sheffield Heights  
Shire  
Signature Flight Support  
Slalom Consulting  
Social Security Administration  
Social Wines  
Society of American Military Engineers  
Sodexo  
Sokolove Law  
South Shore Charter Public School  
Sprint Nextel Corporation  
State Street Corporation (Multiple Locations)  
State Street Foundation, Inc.  
Stonehill Associates  
Sugarman & Sugarman, P.C.  
Suzuki School of Newton  
Tastefully Simple  
Temple Beth Avodah  
Temple Beth El  
Temple B'nai Torah  
Temple Isaiah  
Temple Israel  
Tenants of Landmark Center

Thayer Academy  
The Clarendon - One Back Bay  
The David Project  
The Dog Scoop (West Newton)  
The Dover Church  
The Movement @ Berklee  
The Nielson Company  
Thornton & Naumes, LLP  
Tickets for Charity  
Tiff Education Foundation  
TJ Maxx (Multiple Locations)  
TMP World Wide  
Todd & Weld LLP  
TopSource LLC  
Tower Group Companies  
Trinet  
TRO Jung / Brannen Corporation  
TSA at Logan Airport  
Turkish Cultural Center  
U.S. Attorney's Office  
United Healthcare Community Plan of Massachusetts  
Unitrends Software  
Universal Wilde  
US Alliance Federal Credit Union  
US Customs and Border Protection  
USDA Food and Nutrition Service  
USS Constitution  
VA BOSTON  
VHA, Inc. New England  
Vistaprint  
W Boston  
Walker & Dunlop  
Wall Street Prep  
Washington County Court Deversion  
Wayfair, LLC  
Wellington Management  
Wentworth Institute of Technology SAAC  
Westin Boston Waterfront  
Westin Copley  
Weston Hotels & Resorts  
Whole Foods  
Wilmer Hale  
Winsor School  
Winthrop High School  
Wolf, Greenfield & Sacks, P.C.  
Yasso Yogurt



## LEADERSHIP CIRCLE (\*\*\*)

Bank of America  
State Street  
Target

---

Academy of the Pacific Rim  
Accenture  
ACP Facilities Services  
Adelphi Values  
Adnexus  
AFCO Credit Corporation  
The Agora Society  
Ahold USA  
Ateneo Integrated Student Information Systems  
Akamai Technologies  
Association of Legal Administrators - Boston Chapter  
Alcion Ventures, L.P.  
Alkermes  
Americorps - Cape Cod  
AmeriCorps/VISTA  
Ameriprise Financial  
Andover High School  
Andover Newton Theological School  
AOL, Inc.  
Arbella Insurance  
Arlington Catholic High School  
Association of Legal Administrators  
AT&T Broadband  
Atherton Hough Elementary School  
AvalonBay Communities, Inc.  
Avid Technology, Inc.  
Axiom Corporation  
Babson College  
Bain & Company  
Bay State College  
Bay Village Neighborhood Association  
BBC International  
BDO  
Bentley University  
Berklee College of Music  
BetterLesson  
Boston Interactive Media Association  
Binnacle Capital  
Bishop Fenwick High School  
National Society of Black Engineers  
BlackRock, Inc.  
Blue Cross Blue Shield of Massachusetts  
Blue Hills Civic Association  
Boston Medical Center  
BNY Mellon  
Boston Arts Academy  
Boston Bar Association - Young Lawyers Division  
bostonCANshare  
Boston Cares  
Boston Chapter CPCU Society  
Boston College  
Boston College High School  
Boston Israel Group (BIG)  
Boston Military Entrance Processing Station (MEPS)  
Boston Private Bank & Trust  
The Boston Project Ministries  
Boston Redevelopment Authority  
Boston Scientific  
Social Boston Sports  
Boston Strikers Soccer Club  
Boston University  
Boston Volunteer Meetup  
Boston Youth Fund  
Boys & Girls Club  
Brandeis University  
Bridgewater Raynham High School

Bridgewater State College  
Brigham and Women's Hospital  
Bright Horizons Family Solutions, LLC  
British School of Boston  
Brookline High School  
Brown Club of Boston  
Build On  
Building Impact  
Buildium  
Bunker Hill Community College  
Cambridge 2nd Ward, Latter-day Saints Church  
Cambridge Associates  
Cambridge Montessori Middle School  
Canadian Consulate  
Cantina  
Capital Crossing Servicing Company, LLC  
Carbonite  
Cargo Metrics  
Caring Circle of Milton  
Cartera  
CB Richard Ellis  
Central Michigan University  
Cerulean Pharma Inc  
Chapel Hill-Chauncy Hall School  
Charles River Labs  
Chestnut Hill School  
Choate, Hull & Stewart, LLP  
Church of Jesus Christ and Latter-day Saints  
Cisco Systems  
Citizens Bank  
City of Boston  
City on a Hill Charter School  
City Sprouts  
City Year  
Combined Jewish Philanthropies  
Clearway School  
College of William & Mary  
Columbia Management  
Communispace  
Compass In The Community  
Cooley LLP  
Cornell Club of Boston  
Courtyard by Marriott  
Covidien  
Creative Community Connections LLC  
Credit Suisse  
Culinary Guild  
Cummins Northeast LLC  
Curry College  
CVS Pharmacy  
Dartmouth Club of Boston  
Dassault Systems  
DataXu  
Daughters of Deborah  
Davis, Malm, D'Agostine LLP  
Deeper Life Bible Church  
Deloitte & Touche, LLP  
Deloitte Consulting  
Delta Projects  
Delta Psi Sigma  
Deutsche Bank Securities Inc.  
Diageo  
Dining Alliance  
Dorchester Youth Academy  
Drink Craft Beer  
DST Retirement Solutions  
Dunkin' Brands  
DWA Media  
E Ink Corporation  
East End House  
Eastern Insurance  
Educated Ladies Empowered to Change  
EduTravel

Edward Brooke Mattapan Charter School  
El Centro del Cardenal  
Election Law Enforcement Commission  
Brown Club of Boston  
Eliassen Group  
EMC Corporation  
EMD Serono, Inc.  
Emerson College  
Emmanuel College  
Emmanuel Reformed Church Group  
Energy and Environmental Affairs  
Enservio  
EPIC  
Ernst & Young  
Events & Adventures  
Experian  
FactSet  
Federal Reserve Bank of Boston  
Federated Church of Charlton  
Fessenden School  
Fidelity Investments  
First Congregational Church  
First Parish of Watertown  
First Unitarian Society in Newton  
Framingham State University  
Frozen & Refrigerated Association of the North East  
Franklin Pierce University  
Gage & Wilson Ameriprise Financial  
Gays for Good  
GE - Measurement & Control  
Genzyme  
Georgia Tech Club of Boston  
Gilbane Building Company  
Gillette and State Street Retirees  
Global Organics Ltd.  
Google  
The Governor's Academy  
Grace Episcopal Church Providence  
Grand Circle Foundation  
Grand Circle Travel  
Greenough School  
HS Brands International  
Harvard Alumni Association Travels  
Harvard Business School  
Harvard College Democrats  
Harvard Extension Alumni Association  
Harvard Management Company  
Harvard Pilgrim Health Care  
Harvard University  
Harvard University School of Public Health  
Harvest Institute  
Hasbro Helpers  
Healthcare for All  
Hebrew Senior Life  
Heidrick & Struggles International  
Incorporated  
Hill Holiday  
Hip Hop Mamas  
Hitachi North America  
Hopewell Recovery Services  
Howard University  
Housing and Urban Development - New England  
Humana  
Huron Consulting Group  
Institute for Healthcare Improvement  
Indiana State University  
Informed Medical Decisions Foundation  
Inroads Central New England Inc.  
International Free and Accepted  
Modern Masons, Inc.  
Iron Mountain  
ISITE Design

ITA Software  
Ivy Street School - MAB Community Services  
ITG Boston  
Jobspring Partners  
John Hancock Life Insurance Company  
JP Morgan  
The Junior League of Boston  
Kaplan International Center  
Kaspersky Lab  
Katia & Friends  
Kenexa  
John F. Kennedy School of Government  
Kettle Cuisine  
Keurig, Inc./Green Mountain Coffee Roasters, Inc.  
Key Impact Sales & Systems  
Keystone Partners  
Kimpton Hotels & Restaurants  
Knoll Inc.  
KPMG LLP  
Langham Hotel  
Language Skills English Center  
Lasell College  
Le Meridien Hotels  
Learning Preparatory School  
Legal Seafoods  
LEK Consulting  
Level Up  
Lexington Montessori School  
Lexington Insurance Company  
Liberty Hotel  
Liberty Mutual  
Lime Brokerage  
Lincoln Property Company  
Lincoln Sudbury High School  
Linedata  
Legal Marketing Association: New England Chapter  
LogMeln  
Lombardo's  
Lundberg Family Farms  
MAB Works  
Macy's  
Madison Park Development Corporation  
Magenic  
Malden Catholic High School  
Massachusetts Bar Association  
Massachusetts Chapter of the Appraisal Institute  
Massachusetts General Hospital - Patient Care Services  
Massachusetts Institute of Technology  
Massachusetts Legal Recruitment Association  
Massachusetts Project 351  
Massasoit Community College  
MassDrive Insurance Group, LLC  
McDermott, Will & Emery LLP  
McGladrey LLP  
The Meadowbrook School of Westin  
Mediate Management Company  
Meditech  
Melrose Highlands Congregational Church  
Mercer  
Mercy For Mankind  
MetLife Boston  
Middlebury College  
Millennium Pharmaceuticals  
Milton Academy  
Morgan Stanley  
National Grid  
NEPC

NESN  
NetApp, Inc.  
New Balance  
New England Development  
New Life Church  
New Mission High School  
Newbury College  
Newton Country Day School Alumni  
Ninepoint Medical  
North Quincy High School  
Northeastern University  
Notre Dame Club of Boston  
Novartis  
Ohio State University Alternate Spring Break  
Ohio Wesleyan University  
Old South United Methodist Church  
One Brick  
O'Neill & Associates  
Oracle  
Our Lady of Sorrow  
P & G Gillette  
PanAgora Asset Management, Inc.  
The Park School  
Park Street Church  
Parthenon Capital  
Partners Healthcare  
Pavement Boston  
Payless Shoesource  
Pegasystems Inc.  
Penn Foster Career School  
PepsiCo  
PerkinElmer  
Power Advocate, Inc.  
Presbyterian Church in Needham  
PriceRite  
Pricewaterhouse Coopers  
Prospect Hill Academy  
Protection One, Inc.  
Protiviti  
Providence College Alumni  
ProVisors  
Putnam Investments  
Pyramid Advisors  
QuestBridge  
Raytheon Company  
ReachLocal  
REFA Emerging Leaders  
Riverbed Technology Inc  
Robinson & Cole LLP  
Ropes and Gray LLP  
Rotary Club of Boston  
Rue La La  
Salesforce  
Sargent House  
SavingStar  
Seyfarth Shaw Attorneys  
Sharon High School  
Shawmut Design Construction  
Single Volunteers Boston  
Smith College Club of Cambridge  
Society of American Military Engineers  
Sodexo  
Sophos  
South Shore Charter Public School  
Sovereign Bank  
Spaulding National Running Center  
Spencer Stuart  
Sprint Nextel Corporation  
SquashBusters Inc  
St. Columbkille Partnership School  
St. Helen's Parish  
St. James Church  
St. James Parish  
St. John's Preparatory School  
St. Mary's Church  
Stantec  
Starbucks

Starwood Hotels & Resorts  
Stonehill College  
The Stop & Shop Supermarket  
Stoughton Youth Advisory  
Suffolk University  
Sun Life Financial  
SVB Financial Group  
Tavistock Restaurants  
Temple Aliyah  
Temple Beth Avodah  
Temple Beth Elohim  
Temple Beth Shalom  
Temple Israel  
TFC Financial Management  
The Boston Group  
The Boston Project Ministries  
The Bowdoin Group  
The Cambridge Group  
The Finish Line  
The Flatley Company  
The Hartford  
The Kraematon Group  
The MENTOR Network  
The Mission Continues  
The Next 26  
The Rivers School  
Thomson Financial  
Till, Inc.  
Titan  
TJ Maxx  
TopSource LLP  
Towers Watson  
TPI - Red Pine Scholars  
Trade Stone Software, Inc.  
Travelers Insurance  
Triangle, Inc.  
Tri Cap Hunger Network  
Trinity Partners  
Tufts Medical Center  
Tufts University  
Two Ten Foundation  
UC Berkeley New England Alumni  
United Church of Christ  
United Therapeutics  
University of Connecticut  
University of Maryland  
University of Massachusetts - Boston  
Unum  
UP Academy  
Up To Date  
Upward Bound  
Urban League  
US Airways  
USDA  
UVA Club of Boston  
Varolii Corporation  
Vecna Technologies  
Verizon  
Vertex Pharmaceuticals  
VHA New England  
Vietnamese Eucharistic Society  
Vistaprint  
Vivint, Inc.  
WS Development  
Welch's  
Wellesley High School  
Wellington Management  
Wells Fargo  
Wentworth Institute of Technology  
The West End Apartments  
West End Group  
West Roxbury Boston Scholar Athlete Program  
Wheaton College  
White Mountain School  
Whitman-Hanson Regional High School  
Whole Foods Market

Williams Lea  
WilmerHale  
Wilmington United Methodist Church  
Winchester High School  
Winsor School  
Witt/Kieffer  
Women of Weston  
Work, Inc.  
Workbridge Associates  
Xavier University  
Yawkey Foundation  
Year Up  
Young Global Leaders  
YMCA  
York High School  
Youth & Police in Partnership  
Zipcar  
Zurich Insurance Company



The Greater Boston Food Bank is fortunate to be guided by a dedicated and generous Board of Directors and Board of Advisors who are devoted to our mission to End Hunger Here.

## Board of Directors

### EXECUTIVE COMMITTEE

**Chair**  
Philip Licari  
Managing Director  
*Research Ventures & Licensing Partners HealthCare*

**Vice-chair**  
Woody Bradford, CFA  
President and  
Chief Executive Officer  
*Conning*

**Vice-chair**  
Peter S. Lawrence  
President  
*ArQule, Inc.*

**Vice-chair**  
Verne Powell  
Retired  
*Shaw's & Star Market*

**Vice-chair**  
Seth Weinroth  
Chief Executive Officer  
*Aldwin Apartments*

**Treasurer**  
Lon Povich  
Executive Vice President  
General Counsel & Secretary  
*BJ's Wholesale Club, Inc.*

**Clerk**  
Trudi Veldman  
Sr. Director Biologics  
*AbbVie Bioresearch Center*

**Member Ex Officio**  
Catherine D'Amato  
President and  
Chief Executive Officer  
*The Greater Boston Food Bank*

Christopher P. Flynn  
President  
*Massachusetts Food Association*

**General Counsel**  
Anthony Hubbard  
*Mintz, Levin, Cohn, Ferris,  
Glovsky & Popeo, P.C.*

### MEMBERS

Carol Anderson  
Former Managing Director  
*HarbourVest Partners, LLC*

Vivian Bolt  
Independent Human Resources  
Executive

Robert Bralower  
Principal  
*The Baupost Group, LLC*

M.W. Sam Davis  
Former Senior Managing Director  
*Allstate Investments, LLC*

John A. Fassak  
Business Development Officer  
*Dunkin' Brands, Inc.*

Vicary M. Graham  
Regional President  
*BNY Mellon Wealth Management*

Minnie Joung  
Former Senior Vice President,  
Deputy General Counsel  
*Fidelity Investments*

Mary Jo Meisner  
Vice President, Communications,  
Community Relations,  
and Public Affairs  
*The Boston Foundation*

Les Nanberg  
President  
*Cornerstone Wealth Management*

Sharyn Neble  
Philanthropist & Community Activist

Chip O'Hare  
Chairman and CEO  
*JOH*

Judith M. Palmer  
Director of Marketing and  
External Communications  
*Stop & Shop/New England Division*

Joanna Travis  
Attorney

## Board of Advisors

### MEMBERS

**Chair**  
Gail Graham  
Senior Vice President  
*United Capital*

Hannah Commass  
Director - Investment Strategist  
*Windrose Advisors*

Ted Cutler  
Vice President  
*The Interface Group-Massachusetts*

John Fish  
President/CEO  
*Suffolk Construction Company, Inc.*

David Frost  
Vice President, Director of  
Corporate Accounting  
*State Street Corporation*

Deborah Goldberg  
*Rabb/Goldberg/Cahners Family  
Foundation*

Karen Holmes Ward  
Host, *WCVB-TV's CityLine*  
Director of Public Affairs, *WCVB-TV*

Joanne Jaxtimer  
Regional Executive of New England  
*BNY Mellon*

Kenneth Lee  
Vice President, Global Business  
Services and Transformation  
*Avery Dennison*

Mark Levine  
Executive Vice President  
*Eastern Insurance Group*

Wendy MacGregor  
Senior Vice President  
*AOL*

Theresa McLaughlin  
Group Executive Vice President,  
Chief Marketing Officer  
*Citizens Bank*

Rick Roche  
Chief Executive Officer  
*Roche Bros.*

### BOARD OF DIRECTORS REPRESENTATIVES

Sharyn Neble  
Philanthropist & Community Activist

Judith M. Palmer  
Director of Marketing and External  
Communications  
*Stop & Shop/New England Division*

### HONORARY MEMBERS

Anne and Chad Gifford  
Former Chairs  
*Bank of America*

Mayor Thomas Menino  
*City of Boston*

### CELEBRITY MEMBERS

Matt Damon  
Actor

### AGENCY ADVISORY COUNCIL

Mary Anderson  
*Family Pantry Corp.*

David Andre  
*American Red Cross*

Sr. Joyce McMullen and Edna Bates  
*Project Care and Concern*

Fabrizio Bordo  
*Elliot Community Human Services  
(ECHS)*

Michelle Burch  
*Hebron Food Pantry, Inc.*

Kathy Casaletto  
*Acton Community Supper, Inc.*

Beth Chambers  
*Catholic Charities South*

Joe Consalvo  
*Hyde Park Food Pantry*

Sue Gabriel  
*Beverly Bootstraps Community Services,  
Inc.*

Kathi Garrison  
*ERSCC/Quincy Crisis Center Food  
Pantry*

Lyndsay Haight  
*Our Neighbor's Table Food Pantry and  
Soup Kitchen*

Rev. John Hopkins  
*Lighthouse Christian Ctr. Food Pantry/  
Bethany Gospel Food Pantry*

Emma Melo  
*People Acting in Community Endeavors  
- Emergency Food Pantry*

Julie LaFontaine  
*Open Door Food Pantry & Meal Program*

Mae Lang  
*Full Gospel Tabernacle Food Pantry*

Joyce Lonergan  
*St. Anthony Shrine/Franciscan  
Food Center*

Yvonne Mitchell  
*Church of God/Roxbury*

Sue Morong  
*Women's Lunch Place*

Jack Nolan  
*Pine Street Inn*

George Paiva  
*Annelle Delorme Hagerman  
Food Pantry*

Bill Pye  
*Sacred Heart Outreach Pantry/  
Middleboro*

Dick Rogers  
*MHSA/Bristol Lodge*

Linda Sottile  
*Franklin Food Pantry*

Brenda Swain  
*Falmouth Service Center*

Paul Yates  
*Hope House Inc.*

### FOOD INDUSTRY COUNCIL

Mark DeMichaelis  
*State Garden, Inc.*

Chris Flynn  
*GBFB Board of Directors;  
Massachusetts Food Association*

Kevin Griffin  
*The Griffin Report*

Lori Hall  
*BJ's Wholesale*

Mark Hintlian  
*Leavitt Corporation*

Joe Kelley  
*The Stop & Shop Supermarket Co.*

Don King  
*Acosta Sales & Marketing*

Judy Knapp  
*Hannaford's Supermarkets, Inc.*

Larry Mayes  
*Catholic Charities Boston*

Barry Milanese  
*Costa Fruit & Produce*

Chip O'Hare  
*Johnson O'Hare Co.*

Chris Reisner  
*Kayem Foods Inc.*

Rick Roche  
*Roche Bros. Supermarkets*

Kimberley Rose  
*Whole Foods Market, Inc.*

John Scuccimarra  
*Shaw's Supermarkets*

### KITCHEN CABINET

**Chairs**  
Sarah Biller  
Hannah G. Commass  
Kirby Lunger

**Members**  
Adam Amontea  
Aja Amontea  
Laura Andima  
Leslie Arnould  
Matt Arnould  
Haley Ayraud  
Allison Bebee  
Tiffany Beer  
Carrie Benjamin  
Megan Bourque  
Zachary Bourque  
Ashley Bronson  
Dartagnan Brown  
Renuka Brown  
Derek Bugley  
Jeff Clark  
KC Commass  
Cristina Courey  
Molly Crean  
Alexis Davis  
Mike Dobbert  
J.B. Dowd  
Tiffany Dowd  
Cait Downey  
Erin Edwards  
Jim Febeo  
Kristan Fletcher  
Meaghan Gaven  
Sarah Gilfillan

Matt Goehlert  
Andrew Goloboy  
Shore Gregory  
Robin Gross  
Kirsten Hansen  
Elizabeth Jackson  
Melissa Jacoby  
Kierstyn Kalman  
Erica Kilduff  
Jennifer Kreytak  
Margot Latici  
Anthony Lehv  
Caroline Michaud  
Biliana Mihaylova  
Nikki Monchik  
Anita Mushlin  
Anna Norregaard  
Katie O'Neil  
Andrew Parvey  
Maria Ratanova  
Jenn Reddy  
Eric Ritvo  
Kym Roth  
Mike Rowsey  
Joshua Serie  
Cathy Shea  
Teresa Voght Lisek



The Greater Boston  
**FOOD  
BANK** ®

70 South Bay Avenue  
Boston, MA 02118-2700

Tel: 617.427.5200  
Fax: 617.427.0146

**GBFB.org**